



مجموعة الخليلي
Al Khalili Group

PRODUCT CATALOGUE

BUILDING MATERIAL

HAND TOOLS, POWER TOOLS & INDUSTRIAL
EQUIPMENTS

GENERAL HARDWARE, SANITARY WARES & PPE

CLEANING SOLUTIONS & AIR MOMENT
PRODUCTS

AL KHALILI SPECIALIZED PROJECTS LLC
WATER PROOFING SUPPLY & APPLICATION UNIT
SOLID SURFACES SUPPLY & INSTALLATION UNIT
FIRE AND SAFETY SUPPLY & INSTALLATION UNIT
PAINTS & COATINGS SUPPLY & APPLICATION UNIT

INFORMATION TECHNOLOGY

ELECTRICAL AND LIGHTING



مجموعة الخليلي
Al Khalili Group



Al Khalili Group began its journey to the top as a modest building materials supplier in the early 70's. Over the decades, it has grown as one of the leading multi-faceted infrastructure Company. In addition, there was a tremendous expansion of the Company's different divisions; this includes;

- Al Khalili United Enterprises LLC
- Al Khalili Electrical LLC
- Al Khalili Construction LLC
- Al Khalili Technology LLC
- Al Khalili Specialized Projects LLC
- Al Khalili Logistics LLC,
- Al Khalili Auto Services LLC
- Al Khalili Oil and Gas Services LLC
- Al Khalili United General Trading LLC

With the leadership of Chairman Qais bin Salim Al Khalili, there was a rapid increase in annual turnover in just a decade. The Company also received different awards during its operation and the most significant one was when the Group was awarded by the Bureau Veritas an ISO Certification last September 15, 2012.

With the Director's good leadership and supervision, unity and hard work of all employees, Al Khalili today was known as one of the leaders in infrastructure building in Sultanate of Oman.



From shifts in the global climate to evolving economic and demographic trends in our local communities, we live and work in an environment that constantly challenges us to think a new about our customers, communities and responsibilities as a company.

Building Materials
Timber and Boards, Allied Products, Dry Wall and Ceiling System, Structural Steel

5

Hand Tools, Power Tools & Industrial Equipments

AEG Powertools, Atlas, Norton-Clipper, Stanly Tools, Irwin Tools, Kapriol, Tramontina Hand Tools, Nuair Compressor, Pedrollo Pumps, Telwin, Weld Alloy Products, Nikko Steel, Daishin, Euro Alpha Vibro

17

General Hardware, Sanitary Wares & PPE

Tramontina Kitchen Wares, Pentagono Sanitary wares and Faucets, H2oO Mixers and Sanitary Ware, Euro Alpha-JSP Safety Products, Portwest, General Hardware, Gurbetçiler, Prospec Specialties, Pidilite Adhesive, Wood Finishes, Sealants, Grass Drawer Slide System, Laidlaw, Yuni Ifam, Reguitti Maniglie & Accessori, Locks Lounge

53

Cleaning Solutions & Air Moment Products

Port-a-Cool Portable Evaporative Cooling Units, Annovi Reverberi Pressure Washers, Kranzle High Pressure Cleaners, Karcher Cleaning Equipments,

91

97

Al Khalili Specialised Projects LLC
Water Proofing Supply & Application Unit
Dermabit, Bitu Therm, Henkel, Bitumat

101

Al Khalili Specialised Projects LLC
Solid Surfaces Supply and Installation Unit
Hanex Solid Surfaces, Avonite Surfaces

105

Al Khalili Specialised Projects LLC
Fire & Safety Supply and Installation Unit
Fike, Combat, Bristol, Jactone, Viking, Globe, Buckeye, NK Fire & Safety, Evelux

109

Al Khalili Specialised Projects LLC
Plants and Coatings Supply & Application
Jotun, Sadolin, Berger

113

Al Khalili Technology LLC
Fujitsu, Cisco, CommScope, Fortinet, Cyberoam, Riverbed, Juniper, Schneider, HP, Texecom, Xtralis, Axis, Ajhua, Pyronix, Idteck, Inform

121

Al Khalili Electrical LLC
Schneider, Lan Ric, RR Fans, RR Lighting, Rexton, Thorn, Pierlite, Robus, Etap, Mareli, Proli, Halla, Grupo-MCI, Orbik, Kemps, UFO, Vyrtych, Noral, Siteco, Cooper Lighting, Faustig, Vlux, Oman Cables, Nuhas Oman Cables.

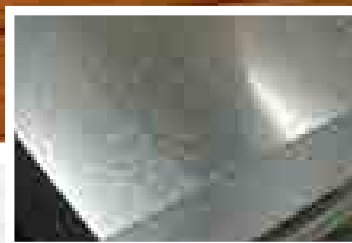
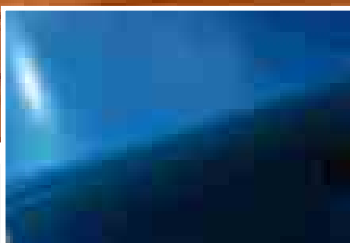
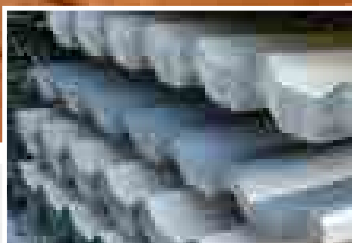
table of contents



مجموعة الخليلي
Al Khalili Group

Al-Khalili

BUILDex



BUILDING MATERIAL DIVISION

AL KHALILI UNITED ENTERPRISES LLC

TIMBER & BOARDS

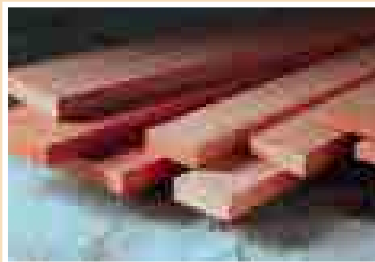
Basic Building Material Products

White Wood



Grade: Merchantable
Thickness: 1", 2", 3", 4"
Width: 2", 3", 4", 6", 8", 10", 12"
Length: 13'
Origin: Chile, Austrian, German & Romanian

Red Meranti Wood



Grade: Merchantable
Thickness: 2", 3", 4"
Width: 4" - 12"
Length: 8' - 24'
Origin: West Malaysia

Red Wood



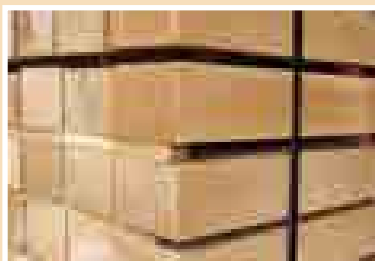
Grade: Merchantable
Thickness: 2", 3"
Width: 3", 4"
Length: 10', 12', 15', 20'
Origin: Malaysia

Ash Wood



Grade: Kiln dried
Thickness: 2"
Width: Assorted
Length: Assorted
Origin: American, Canadian

Beech Wood



Grade: Kiln dried
Thickness: 2"
Width: Assorted
Length: Assorted
Origin: German, Russian

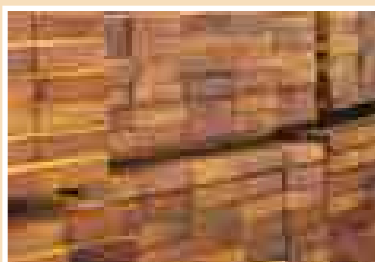
Applications and uses:
Wood is used for doors and door frames, Commercial Building wooden application, framing, molding, balustrades and support structures and furniture
High class interior

Maple



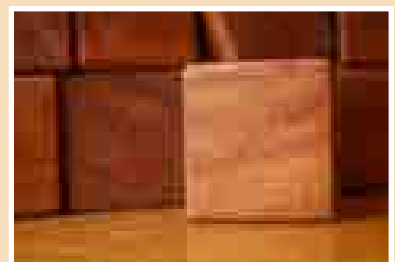
Thickness: 2" & 3"
Width: 5" and above. Random
Length: 8' and above. Random
Origin: North American

Iroko



Thickness: 2"
Width: 6" and above. Random
Length: 8' and above. Random
Origin: Africa

Mahogany



Thickness: 2"
Width: 6" and above. Random
Length: 8' and above. Random
Origin: Africa

Oak Wood



Thickness: 2"
Width: 5" and above. Random
Length: 8' and above. Random
Origin: American Oak

Teak Wood



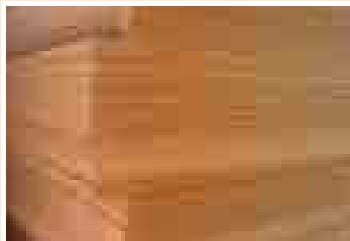
Thickness: 2"
Width: 5" and above. Random
Length: 8' and above. Random
Origin: Burma (Myanmar)

Walnut Wood



Thickness: 2"
Width: 5" and above. Random
Length: 8' and above. Random
Origin: American Walnut

Commercial Plywood



Grade: DBB / CC (MR Glue) JPIC Standard
Thickness: 4, 6, 9, 12, 15, 18, 25 mm
Width: 4'
Length: 8' and 3' x 7' x 4mm
Origin: Indonesia & Malaysia

Marine Plywood



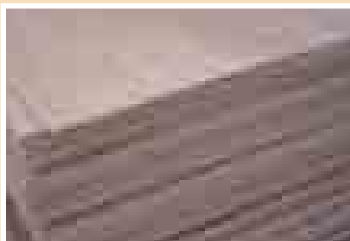
Grade: BS 1088 WBP Glue /
Marine Grade
Thickness: 4, 6, 9, 12, 18, 25mm
Width: 4'
Length: 8'
Origin: Malaysia

Film Faced Plywood



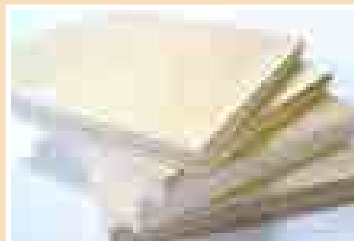
Grade: JPIC Standard
Thickness: 12 mm & 18 mm
Width: 4'
Length: 8'
Origin: Indonesia & China

WBP Plywood



Grade: BB / CC Grade WBP Glue
Thickness: 4, 6, 9, 12, 18 mm
Width: 4'
Length: 8'
Origin: Malaysia & Indonesia

Birch Plywood



Grade: BB / WG WBP Glue
Thickness: 4, 6, 9, 12, 18 mm
Width: 4'
Length: 8'
Origin: Finland & Russia

Applications and uses:
Plywoods are used for
wooden framing, shuttering
and cladding. It may be
used for wall paneling,
flooring and furniture.

Decorative Plywood



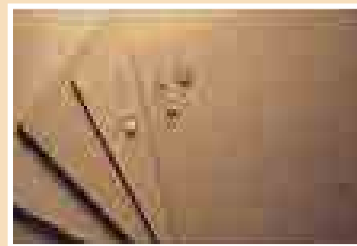
Grade: Beech / Teak with groove
Thickness: 4 mm
Width: 4'
Length: 8'
Origin: Malaysia, Indonesia

White PVC Plywood



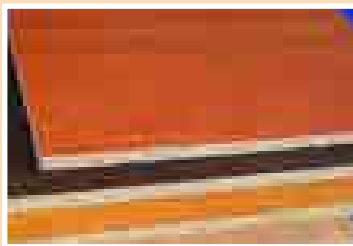
Grade: White PVC Plywood
Thickness: 3.6 mm
Width: 4'
Length: 8'
Origin: Malaysia, Indonesia

Plain MDF



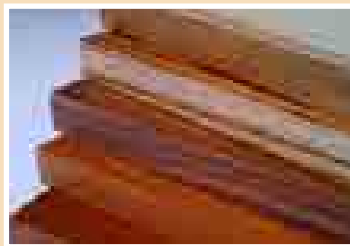
Grade: Medium Density Fiberboard
Thickness: 4, 6, 9, 12, 15, 18, 25 mm
Width: 4'
Length: 8'
Origin: Malaysia

Melamine MDF



Grade: Medium Density Fiberboard with melamine pressed
Density: 720 - 750 kg / Colours - Plain and Wooden Colours
Thickness: 3, 6, 12 and 18 mm
Width: 4'
Length: 8'
Origin: Malaysia

Veneered MDF



Grade: Medium Density Fiberboard with Veneered
Beach / Mahogany / Ash / Maple / Teak
Thickness: 4, 12 mm, 18 mm
Width: 4'
Length: 8'
Origin: Malaysia

Applications and uses:
Melamine MDF, Veneered MDF, Plain MDF and Decorative boards and plywoods are used for interior decorations, wardrobes, kitchen cabinet and others.

Ivory Faced Softboard



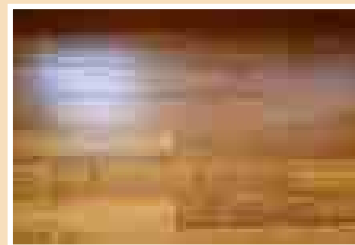
Grade: Ivory Faced
Thickness: 12 mm
Width: 4'
Length: 8'
Origin: Malaysia

Laminates



Grade: Assorted Colors
Matt / Glossy
Thickness: 0.5, 0.8 mm
Width: 4'
Length: 8'
Origin: India, Italy

Parquet Flooring



Types: Laminated Flooring
Engineered Flooring
Solid Wood Flooring
(of all exotic wood species)

Flexcell Bituminous Sheets



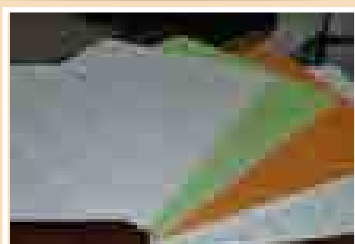
Grade: BS 1142 : 1989 Board
Thickness: 12, 18 mm
Width: 4'
Length: 7', 8'
Origin: Hunton-Norway &
Jollyboard-India

Applications and uses:

Flexcell Bituminous are used as general purpose expansion joint filler in concrete slab and wall construction and as protection board for waterproofing membranes.

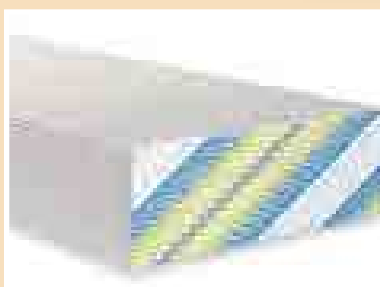
ALLIED PRODUCTS

Gypsum Ceiling Tiles



Sizes: 600 mm x 600 mm x 9 mm
Also Available: Aluminum &
Mineral Fiber tiles.

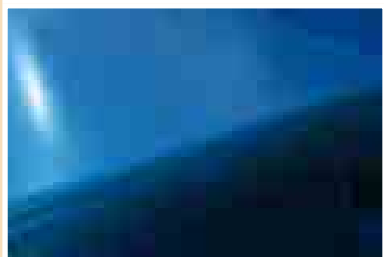
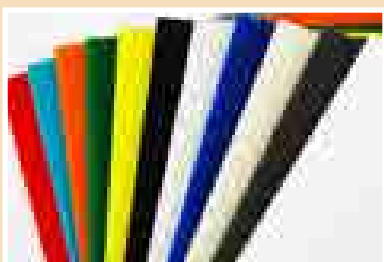
Gypsum Board & Accessories



Range: Regular, MR & FR
Thickness: 12mm
Origin: Oman & UAE

Length: 4 feet * 8 feet
Brands: All major brands

Acrylic Sheet



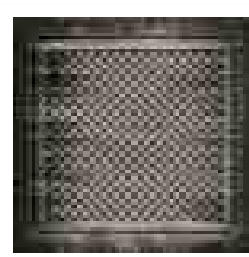
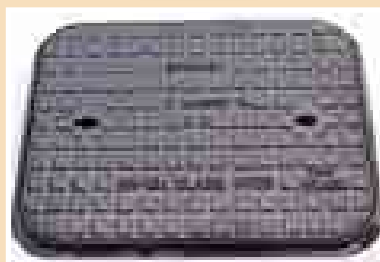
Thickness: 3, 4 & 6mm
Origin: Oman
Length: 4' * 8' & 4' * 6'
Colour: Clear & White

Poly Carbonate Sheets

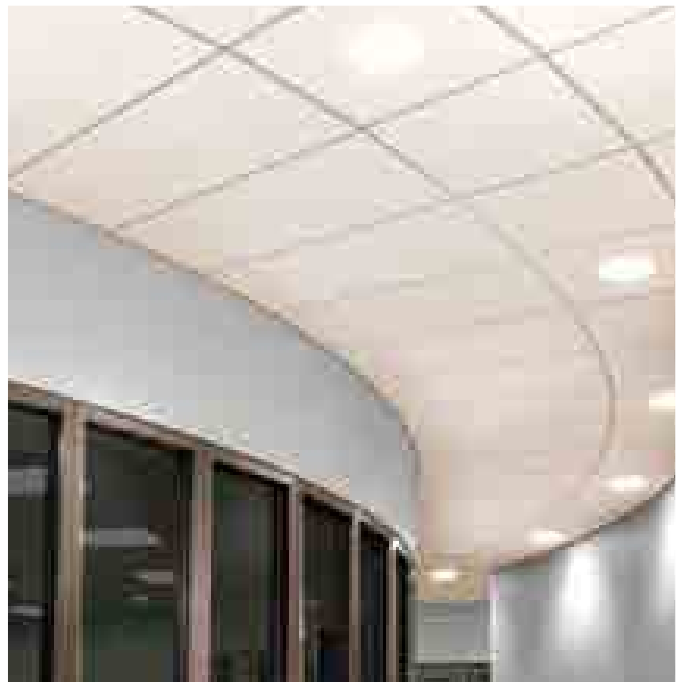


Range: 1.7mm & 2mm
Size: 2*3mtr
Origin: Oman
Grade: Clear, Bronze, Green & Blue

Manhole Covers



Grade: BS-497-76, Single seal &
Double Seal
Origin: India
Size: Assorted
Spec: Cast Iron



Dry wall and ceiling system

CEILING SYSTEM

The GypCeiling ceiling system is a monolithic suspended ceiling system that gives a beautiful, homogeneous appearance and smooth finish without visible joints. The system comprises a concealed Gypsteel ULTRA™ metal frame work suspended from the structural soffit. Gypboard® or Gyproc® plasterboards are screw fixed to the framework to form the ceiling lining. The lining is jointed or skim plaster finished to form a seamless surface suitable to receive most decorative finishes. The plenum used to route ducting and other services can be accessed by providing access panels. Curves, steps and various designer ceiling options can also be easily achieved using this system.

GypCeiling suspended ceiling system:
Featuring Gypboard® / Gyproc®
plasterboard + Gypsteel ULTRA™ metal
framing system

Monolithic appearance

Suspension from concrete soffit surface

Ventilation ducts and other services
accommodated in plenum

Easy to create bulk heads and change levels

Access panels provide service access

Special load bearing ceilings available

Different types of systems available
depending on application and performance
criteria including:

GypCeiling Classic

GypCeiling Hydro

GypCeiling Fire Resist

GRID CEILING SYSTEM

The GRID ceiling system is a lightweight lay-in grid ceiling system available in concealed or exposed grid options. The ceiling comprises a Gyproc® metal framework formed from Main T section with Cross T section slotted in-between to form the grid. The grid is hung from the structural soffit using a connecting clip with a wall angle fixed to the perimeter. Casoprano, Gyprex, Gyptone, Celotex or Certainteed tiles are laid on to the grid to complete the ceiling.

A wide range of decorative effects are possible by selecting the desired tile/board edge profile and finish. Pre-finish options include smooth, textured, patterned, or perforated effects. The ceiling cavity can be used to route ducting and other services and can accommodate light fittings. The ceiling provides substantiated sound attenuation and sound absorption performances.



DRYWALL PARTITION SYSTEMS

A GypWall™ drywall partition system is a light-weight system consisting of Gypsteel ULTRA™ GI framework with Gypboard®/Gyproc® gypsum plasterboard, screw fixed on either side with drywall screws.

The key benefits of a GypWall™ drywall partition system are :

Lightweight – 8 to 10 times lighter than conventional masonry systems

Speed of installation – 3 to 4 times faster than conventional masonry systems

Aesthetic appeal – Seamless and crack free surfaces allowing ease of decoration with paint, tiles, or wall paper

Excellent performance in terms of fire rating, thermal, and sound insulation

Dry construction – Clean, dry, and dust free work environment

Flexibility in creating and dividing spaces according to your needs

Versatility of the systems enables use in all internal areas of construction space

WALL LINING SYSTEMS

Wall Lining systems are systems used to line brick, block and concrete walls with a basic aim to line the background or to improve the thermal or acoustic insulation. It is suitable for all internal applications.

We have two types of wall lining systems:

Gyplyner™ metal frame wall lining system is a cost effective, virtually independent metal frame dry internal lining system. It is based on a lightweight metal frame clad with Gypboard® or Gyproc® plasterboards.

Drilyner™ system uses the principle of gypsum bonding plaster to bond Gypboard®/ or Gyproc® plasterboards directly to the wall.

Ease of handling and simple construction techniques make both Gyplyner™ & Drilyner™ one the quickest and most easily assembled systems currently available in the world.

Grid Ceiling System: Featuring grid ceiling panels (2' X 2' or 4' X 2') + Gyproc® T Grid

Concealed or exposed grid options

Attractive pre-finished white surface.

Provides sound attenuation and absorption

Electrical and other services accommodated in plenum

Wide range of ceiling panels giving smooth, textured, patterned or perforated effects

Different edge types available in both panels & grid Ceiling Panel

Gypsum range – Square edge › Mineral fibre range – Square & Reveal (Tegular) edge Grid

Square-24mm › Reveal - 24 mm › Narrow Reveal - 14mm



STRUCTURAL STEEL

We are pleased to introduce our Structural Steel Division and product range Guide along with the general specifications of the product. This is to assist you with your current and future specification related requirements. From our storage facilities located across Oman, we cater to the top Engineering and Construction firms based in the region as a one stop shop for all the requirements.

We continuously strive to ensure that our customers are receiving the best service in terms of quality price and delivery.

Aluminium Plain Sheet



Range: 0.4mm to 6mm
Origin: Oman, UAE & China
Grade: A1050/H14, AA 1100/H14
JIS G 3302 SGCC/A653

Aluminium Chequered Sheet



Thickness: 2mm to 6mm
Origin: China
Length: 4' * 8' & 4'*6'
Grade: AA1100/F

GI Grating Panel



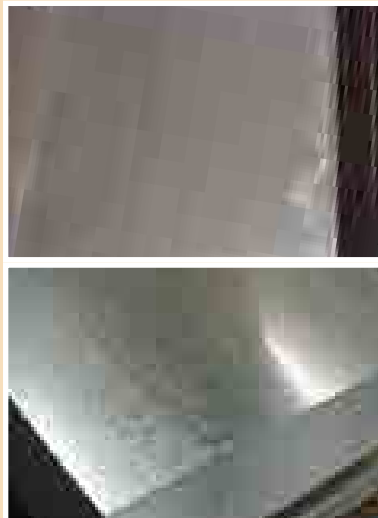
Size: Standard/Custom
Origin: UAE/Oman/ China
Grade: ASTM A36/ ASTM A572

Profile Sheet



Type: GI & Aluminium
Size: 28G, 26G, 24G & 22G
Origin: Oman
Length: Custom made

GI Plain Sheet



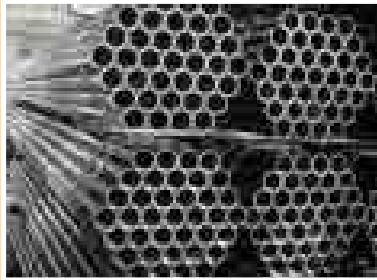
Range: 10gauge to 28 gauge
Size: 4'*8'
Origin: India
Grade: ASTM A653

MS Plain & Chequered Sheet



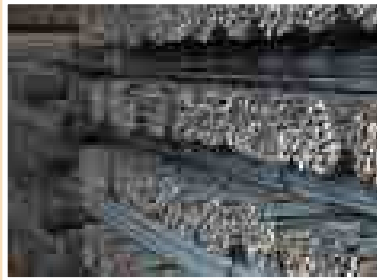
Range: 2mm to 50mm (Plain Sheet)
2mm to 10 mm (Chequered sheet)
Grade: As per ASTM A 36/ JIS G 3302
SGCC/ A653, S275JR
Origin: Korea & China, India
Size: 4'*8', 2*6mtr, 1.5*6mtr.

Pipes



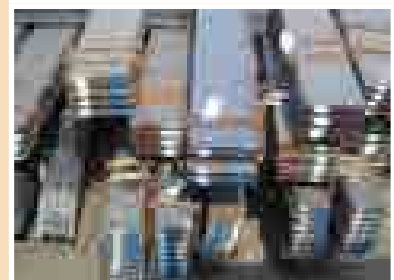
Range: MS, GI & Seamless
Origin: Oman, UAE, Ukraine & China
Grade: ASTM/ A1050/H14, BS 1387
End Type: Plain & Socket (Threaded)

Reinforcing Steel Bar



Size: 8mm to 32mm
Grade: As per BS & ASTM standards
Origin: Oman, Turkey & UAE
Length: 12 mtr

MS Flat Bars



Size: 12mm*3mm to 150mm *12mm
Specification: JIS G3101-SS400/
ASTM A36/EN 10025 S275JR
Origin: Oman, UAE & China

MS Shaft & Square Bars



Size:
MS Square Bars: 8mm to 100mm
MS Shafting Bars: 6mm to 80mm
MS Round Bars: 6mm to 80mm
Specification: JIS G3101-SS400 & JIS G3123-SS41
Origin: Oman, UAE & Turkey

MS Angles



Equal Angles
Size: 25*25*2.5mm to 200*200*20mm
Grade: As per JIS G3101-SS400/ASTM A36/EN 10025 S275JR
Origin: Oman, Turkey & China
Length: 6 mtr

Unequal Angles
Size: 60*40*5mm to 200*100*10mm
Grade: As per JIS G3101-SS400/ASTM A36/EN 10025 S275JR
Origin: Oman, Turkey & China
Length: 6 mtr

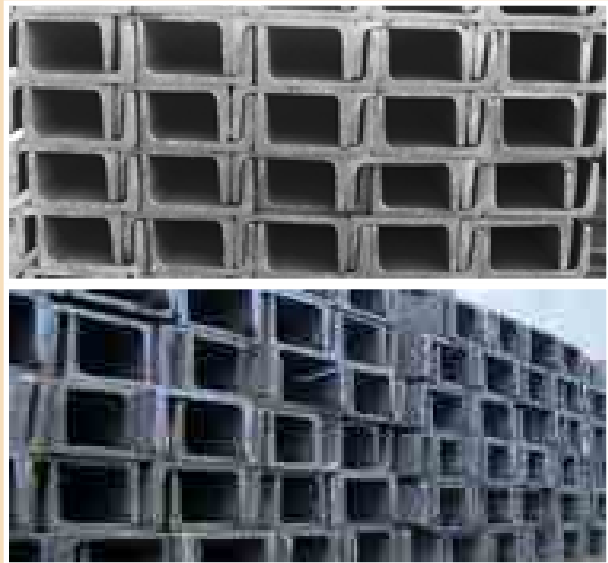
MS Beams



Size:

Universal Beam-127*76 series to 762*267 series
 Universal Coloms- 152*152 series to 406*140 series
 HEA/HEB Section- 100 series to 700 series
 IPE Section- 100*75 to 550*210 series
 JIS I Section- 100*50 series to 500*100 series
 JIS H Section - 100 series to 400 series
 Grade: BSEN 10025 S235JR/10025 S275JR/
 ASTM A36/SS400/Q235B
 Origin: UAE, Turkey, China & Europe
 Length: 6 mtr & 12 mtr

MS Channels



JIS Channels

Size: 75*40 series to 300*100 series with various wall thickness
 Grade: As per JIS G3101-SS400/ASTM A36/EN 10025 S275JR
 Origin: Oman, Ukraine, UAE
 Length: 6 mtr & 12 mtr

UPN Channels

Size: UPN 80 series to UPN 400 series
 Grade: As per ASTM A36/EN 10025S275JR
 Origin: UAE, China & Turkey
 Length: 6 mtr & 12 mtr

Hollow Section (SHS & RHS)



Range: CHS
 Size: 1/2" to 8"
 Grade: As per BS 1387/1985, Grade A & Grade B, & ASTM A-105 etc.
 Origin: Oman, Ukraine & UAE
 Length: 6 mtr

Range: RHS/SHS
 Size: 13mm to 150mm
 Grade: As per ASTM A-536 - Grade A & Grade B, & ASTM A-105 etc.
 Origin: Oman & UAE,
 Length: 6 mtr

Welded / BRC Mesh



Size: 4' * 8' & 8' * 16' in different thickness
 Grade: BS 4449-2005/BS 4483-2005 & DIN 488
 Origin: Oman, UAE & Bahrain

AL KHALILI UNITED ENTERPRISES LLC

Building Materials Division

P.O. Box 1869 | Ruwi | PC 112 | Sultanate of Oman

Tel. No. (+968) 220 35 000 Fax: (+968) 24613506

Email: info@alkhalili.com | buildingmaterial@alkhalili.com

www.alkhalili.com

GSM : (+968) 99478850 | (+968) 99446931

Email: : salesbm@alkhalili.com



مجموعة الخليلي
Al Khalili Group

Al-Khalili

BUILDex



**HAND TOOLS, POWER TOOLS AND
INDUSTRIAL EQUIPMENTS**



Al Khalili United Enterprises LLC provides Portable Electric Tools suitable for varied applications on Metal, wood, Aluminum, Plastic, Stone, Concrete and similar other material for Cutting, Grinding, Drilling, Sanding, Sawing, Polishing operations. On the strength of its vast experience and expertise the company has been undertaking various steps to come out with better products.

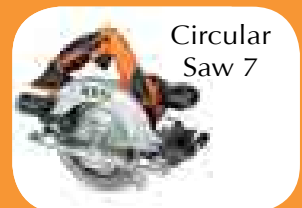
Al Khalili have partnered with leading International brands as a part of our endeavor to provide all kinds of Portable Electric Tools under one roof. The name "Al Khalili" reckons with value for money.

POWER TOOLS

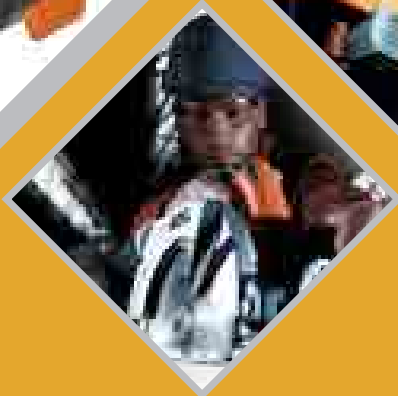
SINCE 1897



AEG Power tools are brought in Al Khalili since November 2007, we do keep the stock of spares for the available AEG Power tools in the market. We have now started supplying spare parts for ex-range of tools in a time span of 60 days from the date of confirmation. We are trying our level best to cut down this lead time to minimum days.



PS 305 DG



Metal Fabricators
Carpenters
HVAC
Interior fittings
Electricians





Atlas is a new brand from Saint-Gobain Abrasives offering a range of products including cutting-off and grinding wheels, bonded and coated abrasives and diamond blades. This new range brings extremely competitive solutions for our customers' most popular applications in the industrial and non-industrial sectors, for example maintenance, wood, metal working, automotive industry and construction. Atlas brings benefits including continual product development and reliable quality at the best possible price.

Our responsibility to our customers, particularly in the area of safety and comfort, is taken very seriously. Products are designed and produced to the most stringent quality standards to guarantee optimum personal safety and user comfort.

Saint-Gobain Abrasives is an active member of both FEPA and oSa.

Atlas products comply with all expectations of European safety standards.

FEPA, the Federation of European Producers of Abrasives, is dedicated to the promotion of safety in the use of abrasives and is actively involved in the preparation and implementation of the European (EN) and International Standards (ISO) for Abrasives and Grinding Machines.

oSa, the Organisation for Safety of Abrasives pursues in close collaboration with FEPA the objectives of supporting both the currently attained safety standards for abrasive products and their further developments.

The internal testing and certification is based on the following standards:

- Safety requirements for bonded abrasive products (EN 12413: 1999)
- Safety requirements for super abrasive products (EN 13236: 2001)
- Safety requirements for coated abrasives (EN 13743: 2002)

Thus the oSa symbol on the abrasive signifies enhanced application safety for the user, a reduced liability risk and excellent brand image for manufacturers, traders and those in marketing.



GRINDING WHEELS

Applications: Standard, general purpose range of wheels giving above average performance across a wide range of materials.

Metal - type 27 Maximum operating speed 80m/s

Dimensions Dia x T x Bore (mm)	Product Specification	Pack Qty	Article Number	EAN code
100 x 6.0 x 16.0	A24R-BF27	10	66252828865	3157625118492
115 x 6.0 x 22.23	A24R-BF27	10	66252828866	3157625118508
125 x 6.0 x 22.23	A24R-BF27	10	66252828867	3157625118522
150 x 6.0 x 22.23	A24R-BF27	10	66252828868	3157625118539
180 x 6.0 x 22.23	A24R-BF27	10	66252828869	3157625118546
230 x 6.0 x 22.23	A24R-BF27	10	66252828870	3157625118553
230 x 8.0 x 22.23	A24R-BF27	10	66252829677	3157625124356
230 x 10.0 x 22.23	A24R-BF27	10	66252829678	3157625134379



CUTTING-OFF WHEELS

Applications: Standard, general purpose range of wheels giving above average performance across a wide range of materials.

Metal - type 42 Maximum operating speed 80m/s

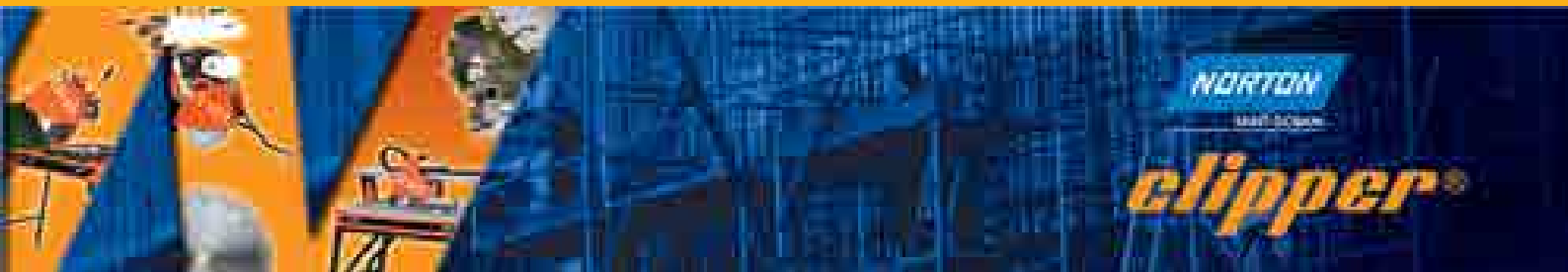
Dimensions Dia x T x Bore (mm)	Product Specification	Pack Qty	Article Number	EAN code
100 x 3.0 x 16.0	A30S-BF42	25	66252829680	3157625118683
115 x 3.0 x 22.23	A30S-BF42	25	66252828884	3157625118867
125 x 3.0 x 22.23	A30S-BF42	25	66252828885	3157625118829
180 x 3.0 x 22.23	A30S-BF42	25	66252828886	3157625118904
230 x 3.0 x 22.23	A30S-BF42	25	66252828887	3157625118935



Metal - type 41 Maximum operating speed 80m/s

Dimensions Dia x T x Bore (mm)	Product Specification	Pack Qty	Article Number	EAN code
300 x 3.5 x 25.4	A24R-BF41	10	66252919373	3157625495463
300 x 3.5 x 32.0	A24R-BF41	10	66252828801	3157625119215
350 x 3.5 x 25.4	A24R-BF41	10	66252919374	3157625495470
350 x 3.5 x 32.0	A24R-BF41	10	66252918892	3157625411159
400 x 4.0 x 25.4	A24R-BF41	10	66252919375	3157625495494
400 x 4.0 x 32.0	A24R-BF41	10	66252829684	3157625119208





1100 W
 Ø 230mm
 860 -
 1200mm
 66 - 72kg
 230V 1~

**SPECIAL
 LONG TILES !**

Rail Tile Saws ▶ TR230 GS & TR231 GL

TR 230 GS and TR231 GL are professional tile saws with powerful motor (1,1 kW) and cutting length adapted to large tiles (860mm for S type and 1200 mm for L type).



Features

Tilting head
 Rubber coated table + clamps (TR231 GL)
 Reinforced frame (TR231 GL) with foldable handles
 Cutting guide with angular setting + 45° guide-a-cut
 Built-in side extension
 Lateral guide-a-cut

Benefits

Perfect for mitre cut from 0° to 45°
 Absolutely straight cut even on the longest tiles
 Stronger frame with easy transporation
 Precise angle cuts
 Easy use of machine with wide materials
 High accuracy cuts with long materials



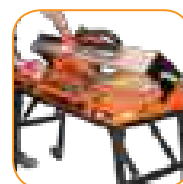
Clamps for fixing tiles
 (TR231 GL).



Easily removable rubber-coated
 table (TR231 GL).



Built-in side extension.



Tilting head.



2,2kW
 Ø 350mm
 1150mm
 125kg
 230V 1~

Masonry Saw ▶ CMR 351

The new Clipper CMR 351 is a simple and robust saw dedicated to stone cutting, featuring both tilting rail and head.



Features	Benefits
Removable feet and retractable handles	Easy transportation and storage
Built-in side extension	Better stability when cutting large materials
Lateral guide-a-cut	High accuracy cuts with long materials
Tilting head (cutting depth direction)	Adaptation of cutting depth
Tilting rail	Perfect for mitre cuts from 0° to 45°
Three handles on cutting-head	Optimised operator's position



Side extension.



Retractable handles.



Lateral guide-a-cut.



Three handles.



Tilting head and rail.



3 > 4,8 kW
Ø 350 >
600mm



500mm

156 >
168kg

230V 1~
400V 3~

Petrol

The new CLIPPER CM 501 Major is a powerful and robust masonry saw, designed for continuous operation on the job site or industrial locations. The 'stay level' blade guard and heavy duty conveyor cart provide safe and easy

cutting of a wide variety of masonry, refractory and stone materials. CLIPPER CM 501 Major features innovative design for best user's satisfaction, both in terms of maintenance and utilisation.

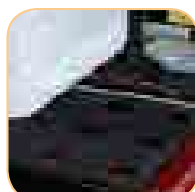
Masonry Saw ▶ CM 501 *Major*



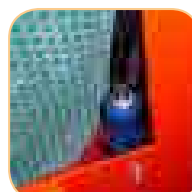
Features	Benefits
Conveyor cart with anti-slipping surface	Accurate and stable cut
Easy access to water pump	Easy maintenance
Double lifting rails	Easy and safe transport with forklift
Blade adjustment with crank	Easy and accurate blade depth setting
Conveyor cart including friction resistant tilted wheels	Better cart stability improving cutting quality
High accuracy standard cutting guide with per degree angular setting	Quick, precise and easy cut without additional accessory
Adjustable depth stop	Flexible depth of cut setting for 300mm to 400mm diamond blades
Stay level blade guard	Maximum blade cover and safety at any pivoting head position
Water return channels	Dry and clean work area to increase operator's comfort
Replaceable wooden insert	Diamond blade protection
Totally enclosed bolt-on blade shaft assembly	Bearings protection from dust ingress
Spring-loaded cutting head actioned by foot pedal	Improved control of the cutting pressure for flexibility and quality of cut
Head locking device	Straight-through cutting
Oil drain hose	Easy maintenance
No-volt release : power loss causes automatic shut-off	Increase operator safety



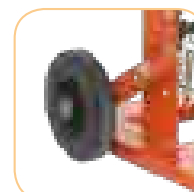
Friction resistant tilted wheels.



Anti-slipping surface.



Easy access to water pump.



Easy transportation (optional accessory).



4,8 > 5,5kW
Ø 650mm



500mm

212kg

400V 3~

Petrol

The Clipper JUMBO 651 is a powerful and robust saw, designed for continuous operation on the job site or industrial locations.

Masonry Saw ▶ JUMBO 651

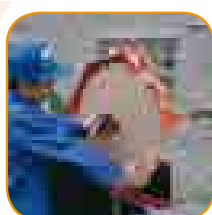


Features

Heavy duty frame with 4 wheels
2 wheels with locking device
Conveyor cart with 4 location rollers
Easy access to blade
Easy access to water pump

Benefits

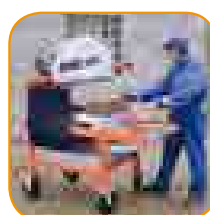
Easy movement on site
Secure machine during cutting operations
Excellent cutting accuracy
Save time for tool change
Easy maintenance



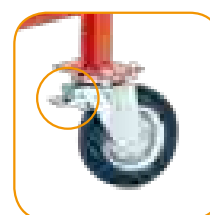
Easy access to the blade.



Easy access to the water pump.



Heavy-duty frame with 4 wheels.



2 wheels with locking device.



13 Hp
Ø 400mm
92kg
Petrol

The Clipper C71 is a compact, powerful and economical floor saw, for wet or dry cutting of asphalt or concrete.

Floor Saw ▶ C71

26

HAND TOOLS, POWER TOOLS AND INDUSTRIAL EQUIPMENTS

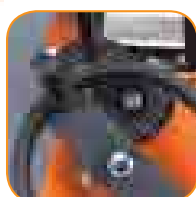


Features

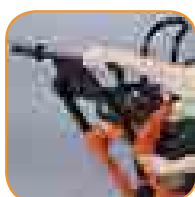
- Heavy duty frame
- Continuous depth control with hand wheel and gauge
- Removable 20 L polyurethane water tank
- Adjustable handles
- Rigid front pointer
- Optimised weight distribution
- Blade shaft locking device
- Grease nipples on rear wheels and blade shaft bearings
- Rear wheels in recess from the cut
- Parking brake

Benefits

- Robust, low vibration level
- Quick, easy and accurate setting
- Easy wet cutting in isolated locations
- Ergonomic user's working position
- Helps user to maintain straight and accurate cut
- Outstanding cutting performance
- Easy blade removal
- Easy maintenance
- Easy cut along an opened trench
- Safety



Hand wheel and gauge.



Adjustable handles.



Rear wheels in recess from the cut.



Lifting eye.



Floor Saws ▶ CSB1 Diesel & Petrol



The Clipper CSB1 Petrol is a fully self-propelled heavy duty machine driving a 500mm or 600mm diamond blade.

The diesel version is a Heavy duty deep cutting saw, fully self propelled with manual hydraulic raise and lower. Supplied complete with a 25 litres built-in water tank.



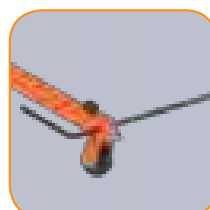
Features	Benefits
Heavy duty jig welded steel frame	Robust and reliable
Multiple engine options	Adapt type of engine to your specific needs
Two forward propulsion options (hand wheel, self-propelled)	Adapt to your budget
Manual or hydraulic raise and lower of the blade	Quick, easy and accurate depth setting
Built in water tank	Wet cutting autonomy in isolated locations
Quick release blade guard with 1/4 turn camlock fasteners	Quick and easy blade change
Built in lifting eye at centre of gravity	Easy loading and transportation
High resistance wheels with sealed heavy duty bearings	Smooth and straight cutting
Rigid front pointer	Helps user to maintain machine alignment



Manual or hydraulic raise and lower of the blade.



Built-in water tank.



Rigid front pointer.



Built-in lifting eye.



POWER FLOATS

CT901

4,8kW
Ø 950mm
75kg
Petrol



The CT901 is a medium weight machine, and the most popular power float at users. It covers a wide range of applications.



Blades safety guard rings

Handling of the machine

Adjustable and foldable machine arm

Accessories


FEATURES	BENEFITS
Heavy duty jig welded steel frame	Robust and reliable
Dead man handle	User's safety
Blades safety guard rings	Ensures user's safety while maintaining good visibility
Mechanical blades pitch control	Setting accuracy for perfect surface finish

MODEL	CT901 MP
Item No	701846 29948
EAN 13 Code	5450248 440499
TECHNICAL DATA	
Included tools	Finishing blades
Power Source	Petrol
Power kW (Hp)	4,8kW (6,5Hp)
Motor Type	HONDA GX200
Supply Voltage	-
Fuse / Generator	-
Blade rotation diameter (clockwise)	900mm
Guard ring diameter	950mm
Distance to wall	25mm
Pitch control	Mechanical
Hand Arm Vibrations	< 2,5 m/s²
Sound power / pressure level	94dB(A)/85dB(A)
Dimensions (LxWxH)	1980 x 950 x 1060mm
Weight (without pans)	75kg



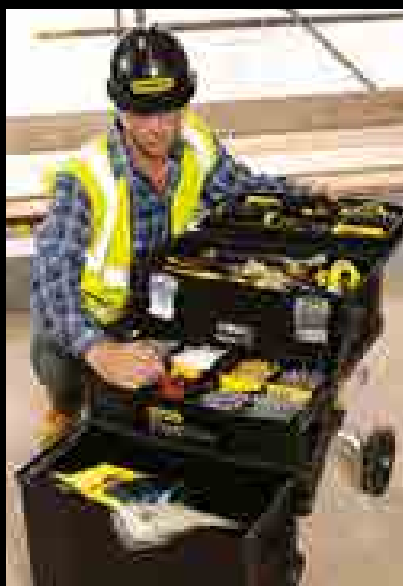


STANLEY.

Hand tools since 1843 



BEST SELLER LIST 2013



29

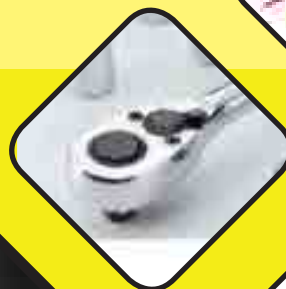
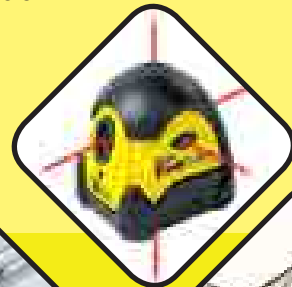
HAND TOOLS, POWER TOOLS AND INDUSTRIAL
EQUIPMENTS

STANLEY. HAND TOOLS

Al Khalili carries the worldwide leader and manufacturer of hand tools offering a board and comprehensive range of finest quality hand tools, laser measuring tools, automotive tools, tool sets and home improvement enthusiasts. Well known for thier efficiency and durability. STANLEY tools fulfill the most important and and delicate requirments of professionals.

As the world's largest handtool brand, Stanley has an on-going commitment to designing, developing and manufacturing products that meet the exacting demands of today's end users

Al Khalilis team will be able to advice you on thousands of products and how to pick up a tool and make something great of it.





IRWIN Industrial Tools manufactures and distributes professional grade hand tools and power tool accessories worldwide for trade professionals who demand superior performance and durability on the job. IRWIN Industrial Tools' brand portfolio features user-preferred category leaders such as IRWIN®, Vise-Grip®, Jack®, Quick-Grip®, Speedbor®, Strait-Line® and Unibit®.

For over a century, innovation has been the hallmark of IRWIN Industrial Tools.

Beginning in 1885, with the development of the first IRWIN Auger Bit, and progressing with the introduction of Vise-Grip Locking Tools, SPEEDBOR Flat Bits, JACK Saws, and QUICK-GRIP Bar Clamps, IRWIN has been at the forefront of the industry, creating superior tools for the professional tradesman.

Our impressive track record of new product development is born from our passion for understanding the needs of our primary user - the professional tradesman. This dedication to improving products begins in the field, where IRWIN'S IMPACT End-User Teams visit job sites. There, the team learns first-hand, how to improve our products to help the pros increase their productivity. From the beginning of our product development process to the performance of these products in your hands, IRWIN is where you train, work, play and buy. This commitment is apparent in everything we do.



PLANES & PLANE CUTTERS

BENCH PLANES

IRWIN® Record® bring decades of experience, well proven design and advanced production techniques to produce this fine range of woodworking planes.



Item No.	Description	EAN	Master Pack	Shelf Pack
T04	Smoother Plane, 9-3/4" - 2" (50mm), Wooden Handle	0734442053408	24	1
TSP4	Smoother Plane, 9-3/4" - 2" (50mm), Plastic Handle	0734442165729	48	4
T05	Jack Plane, 14" - 2" (50mm), Wooden Handle	0734442536482	24	1
TSP5	Jack Plane, 14" - 2" (50mm), Plastic Handle	0734442165910	48	4
T07	Jointer Plane, 22" (60mm) - 2-3/8" - length 550mm, Wooden Handle	0734442054009	12	1

REBATE PLANE

Item No.	Description	EAN	Master Pack	Shelf Pack
T778	Rebate Plane, Length 8-1/2" - Cuts Rebates up to 1-1/2" 38mm	0734442559252	12	1

BLOCK PLANES

Item No.	Description	EAN	Master Pack	Shelf Pack
T06012	Block Plane, 6" (42mm) - 1-5/8" 12-1/2° - 20° low angle	0734442552086	24	4
T0912	Block Plane, 6" (42mm) - 1-5/8" 12-1/2°	0734442548430	24	4

SPOKESHAVES

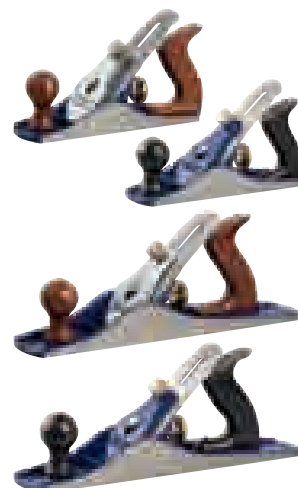
The IRWIN® Record® Spokeshave is used for chamfering and shaping - flat-faced (A151) for convex surfaces and round-faced (A151R) for concave surfaces.

Item No.	Description	EAN	Master Pack	Shelf Pack
TA151	Spokeshave, Flatface Length 10" (54mm)	0734442056164	24	4
TA151R	Spokeshave, Roundface Length 10" (54mm)	0734442056287	24	4

REPLACEMENT PLANE CUTTERS

Item No.	Description	EAN	Master Pack	Shelf Pack
TS12	Plane Cutter 50 mm for 04, 05, SP4 & SP5	0734442056522	24	6
TS1238	Plane Cutter 2-3/8" for 06, 07	0734442056645	24	6
T02200	Plane Cutter 6" (42 mm) for 09-1/2" & 060-1/2"	0734442057963	24	1
T7780	Plane Cutter for 778	0734442058809	24	1
TA151B	Plane Cutter 42mm	0734442058922	24	1

High-quality cast grey iron body with precision machined base
Carbon steel cutting iron
Robust lever cap has three pressure points & brass locking nut for secure location of the cutting iron
Fine adjustment is controlled by a brass adjusting nut and lateral adjusting lever
Impact-resistant ABS resin handle and knob for comfort and control



QUICK-GRIP®

In 1986 Joe Sorensen, an air boat builder in Nebraska USA, was looking for a better way to hold down his steel panels as the clamps he was using twisted the thin steel as he worked.

A year later, with a good idea for a new style of clamping, he came to American Tools and soon became an employee and working together, the concept for a pistol grip one-handed bar clamp was born. This revolutionary tool was quickly patented and brought to market in 1989 with a full line of clamps under the Quick-Grip® brand name. The line was later extended from the Original clamp to the Micro, Mini, Handi, Quick-Change, and more recently the XP clamp.

Since the launch, IRWIN® Quick-Grip® has become the world leader in one-handed bar clamps and is the industry standard which has changed the way tradesman do their jobs, greatly improving their ability and efficiency on the job.



Record®

Originally established in 1898 in the South Yorkshire city of Sheffield in the UK. The Record Tools Factory was swiftly able to make a long lasting contribution to the worldwide reputation of the region for the manufacture of high quality steel and castings.

The Record® brand name was introduced in 1909 and by the 1920's the product range had expanded into Vices, Planes, Clamps and Pipe Wrenches enabling the business to grow rapidly in the UK and many overseas markets.

Today, IRWIN® Record® continues excelling by sticking to the traditional values set by its founders, producing tools that are highly valued amongst professional users for quality and durability that remains strong today.



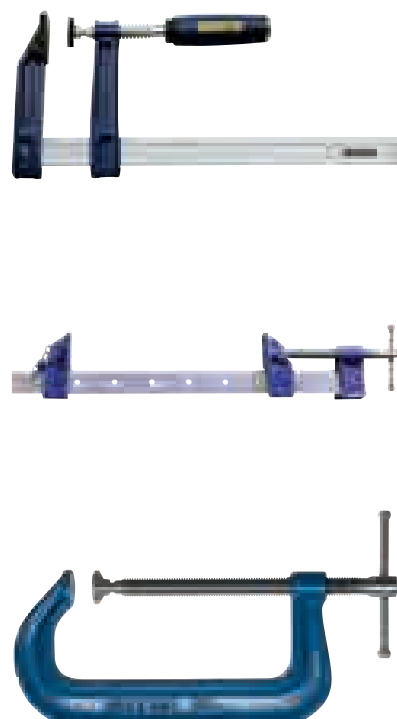
QUICK CLAMPS



VICES



STEEL CLAMPS



Body and sliding jaw are cast from close grained grey iron which is machined on all friction surfaces for a smooth reliable action
Safety stop prevents the slide from being separated from the body
Replaceable hardened steel jaws
Unbreakable SG iron nut can be replaced when worn
Fused steel handle will bend before the vice can be overstressed

SPARE PARTS ALSO AVAILABLE
SEE PAGE 59

MECHANICS' VICE - HEAVY DUTY RANGE

Rigid and robust, the body and sliding jaw are cast from close grained grey iron which is machined on all friction surfaces for a smooth reliable action. The jaws, handle and main screw are steel, the latter having a two-start rolled acme thread to speed the jaws from fully closed to fully open with a minimum of winding. The most commonly used vice in the IRWIN® range. Full line of replacement parts available.



Item No.	Description	EAN	Master Pack	Shelf Pack
1ZR	No 1, Mechanics' Vice 3" / 75mm	0734442000129	144	1
3	No 3, Mechanics' Vice 4" / 100mm	0734442000488	60	1
4ZR	No 4, Mechanics' Vice 4-1/2" / 115mm	0734442000501	40	1
5	No 5, Mechanics' Vice 5" / 125mm	0734442000723	40	1
6	No 6, Mechanics' Vice 6" / 150mm	0734442000846	32	1
8ZR	No 8, Mechanics' Vice 8" / 205mm	0734442000869	24	1

WORKSHOP VICES - MEDIUM DUTY

Strong and durable, the body and sliding jaw are cast from close-grained grey iron which is machined on all friction surfaces for a smooth reliable action. The jaws, handle and main screw are steel, the latter having a two-start rolled acme thread to speed the jaws from fully closed to fully open with a minimum of winding. This compact Bench with anvil is specifically designed for medium-duty workshop applications for both, the professional craftsman and the DIY enthusiast who expect a compact vice with superior clamping force, safety features and excellent finish.



Item No.	Description	EAN	Master Pack	Shelf Pack
10507771	Workshop Vice with Anvil, 3-1/8" / 80mm	5706915077711	1	1
T41211000	Workshop Vice with Anvil, 1 TON, 4" / 100mm	0734442000204	105	1
T3TON3VS	Workshop Vice with Anvil, Swivel Base, 4" / 100mm	0734442000310	60	1
4935505	Workshop Multi-Vice, with Anvil, Swivel Base, 5" / 125mm	0038548989890	40	1
T6TON6VS	Workshop Vice with Anvil, Swivel Base, 6" / 150mm	0734442000860	40	1

Kapriol®



The stages of a growth path. It's commonly stated that a company has the print of its founder written in its DNA. This is what a lot of people call "imprinting": a mix of values, models of behaviour and attitudes that become part of the company's identity.

In other words it's as if the company had been fashioned by its creator and then, in the following generations, by whoever is running it. Proof that, even before products, offices, markets and machines, a company is made up of people. And who can love his own creation more than the entrepreneur? Of course, this example doesn't apply to the large multinationals or companies with a heavily managerial direction: the characteristics and motivations of those running them are different. But for those companies, mainly family-run ones, where the baton is passed on from one generation to the next and the entrepreneur is heavily involved in the daily management of company, this consideration is even more alive and current. Like at Morganti a reference company at international level in the working tools and clothing. Eighty years of history behind it and four generations of entrepreneurs, firmly rooted in Lecco and its valleys, cradle of the Lombard metalworking industry, but always looking afar.

The Morganti Group, with its subsidiary OMEC, now occupies a surface area of over 18 thousand square metres, among offi-ces, warehouses and production facilities.

It is here, in the Civate headquarters, that Sandro Morganti, with his sons Alberto and Franco, leads his company as he has done for the last fifty-five years. At 12 years old Sandro Morganti started working with his father, while still at school. Sandro Morganti's father, Francesco, was a great forger: he learnt the job from his father, who had a power hammer in the Valsassina, cradle of the Lecco metalworking industry.

HAND TOOLS

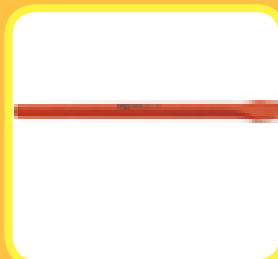
Kapriol

Product Range:

Hammers
Balcksmith Hammers
Sledge Hammers
Hammers
House Hatchet
Mallets
Chisels

Hammers
Wrenches
Screwdrivers
Pilers And Shears
Pipe Wrenches
Cutters And Spare Blades
Tools For Electricians
Hacksaws

Levels
Laser Levels
Laser Levels
Measuring Tapes
Measuring Roller
Double Rulers
Tracing And Measuring Tools



TRAMONTINA

HAND TOOLS





NUAIR is an international group which today represents the largest manufacturer of piston compressors in the world due to its consolidated experience and the leadership of a family which has dedicated itself to compressed air for two generations.

Nu Air makes its mark on the market thanks to its dynamism and technological innovation. Know-how, creativity, quality, integrated marketing activities, flexible production processes, quality and 'tailor-made' customer service are the strong points of NU AIR which avails itself of a team of managers across Europe who are highly experienced and qualified and able to interpret the needs of the market and clients in relation to product definition, development and distribution.

NU AIR has developed a wide range of quality products for the most discerning craftspeople and for professional and industrial use and it designs, produces, purchases and distributes these products all over the world from its three manufacturing facilities and its eight distribution centres strategically located in Europe, Asia and North America.

NUAIR has enriched its production and expanded its range with the addition of TWO-STAGE COMPRESSORS, SILENCED COMPRESSORS and SCREW COMPRESSORS, accompanied by a wide range of accessories for air treatment.

NU AIR's professional and industrial compressors make their way on to the market with a broad and complete range of solutions, including piston compressors which range from 1.1kW to 18kW and industrial compressors which range from 2.2kW to 75kW.





Accessories and Spare parts

Spread Kit Tank KS 24
Pressure Switches
Pressure Gauges
3-5 non Filters
Easy Press 1 to 11
Capasitters for Surface Pumps
Machnical Seal for Pumps
Fans for Pumps



PK pumps with peripheral impeller



PQA pumps with peripheral impeller. Recommended for industrial applications



CP centrifugal pumps



CP close - coupled centrifugal pumps with threaded ports



HF centrifugal pumps medium flow rates



NF centrifugal pumps with flanged ports



F standardized centrifugal pumps to EN 733 - Dn 24255



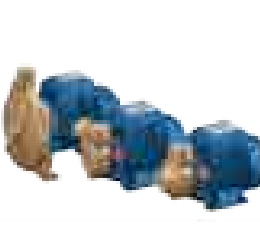
AL - RED stainless steel centrifugal pumps



3-4 CR multi-stage centrifugal pumps. Stainless steel pump body



4SR/6SR Submersible pump with the performance of a centrifugal pump.



BZ pumps with bronze body



TOP Vortex submersible pumps for dirty water



RX Vortex submersible pumps for dirty water



VX Vortex submersible pumps for sewage water



EASYPUMP pumps with electronic controller



COMBIPRESS pressure boosting sets



TELWIN THE "HOME OF WELDING"

TELWIN was established in 1963, just outside of Vicenza. Strategic know-how, determination, and drive have contributed to its success in the welding field and in that of cutting systems and battery chargers, making it a well-known success in the industry world. TELWIN has continued growing, consolidating its experience, its innovation and evolution ability, ready to take on the technological and market challenges of the third millennium.

Process and product technology are the new frontiers TELWIN wants to pull down. Its flexible production systems, its innovative assembling technologies, and its automatic commissioning plants show TELWIN's commitment to an efficient and high-quality production process.

The quality of TELWIN's system has been awarded the ISO EN UNI 9001:2000 Certification. An important target guaranteeing the quality of the product, organization and services offered. The CE marking and the recognition by the most important European and International Certification Bodies guarantee the highest quality and ensure that all of TELWIN's products comply with the technological, qualitative and safety requirements set by the standards of the different countries.

For TELWIN global quality means a benchmark by which advancing systematically and safely in order to consolidate excellency.



Nordika 2160 230v ac
Single-phase, on wheels, fan-cooled stick electrode welding machine for mma welding in alternating current (ac). Stepless regulation of welding current. With thermal protection. Usable electrodes: rutile. Complete with welding accessories.



Nordika 3250 230-400v
Single-phase, on wheels, fan-cooled stick electrode welding machine for mma welding in alternating current (ac). Stepless regulation of welding current. With thermal protection. Usable electrodes: rutile.



QUALITY 280 AC/DC
MMA stick electrode welding machine in direct (DC) and alternating current (AC). Stepless regulation of welding current. With thermostatic protection. Use with a wide range of electrodes: rutile, basic, stainless steel and cast iron



ARTIKA 270
MMA stick electrode welding machine in alternating current (AC). Stepless regulation of welding current. With thermostatic protection. Use with a wide range of electrodes: rutile.



SPOT WELDING MACHINES DIGITAL CAR SPOTTER 5500 PLUS 400V + ACC

Single-phase, microprocessor controlled, spot-welding machine suitable for use in the car body repair. The multifunction control panel allows the automatic regulation of spot welding parameters according to the chosen tool and sheet thickness. It is equipped with the «studder» kit for spot welding of nails, screws, washers, rivets and special washers, sheet warming, upsetting and patching.

TECHNOLOGY PLASMA 41

Inverter, compressed air plasma cutting system, with contact striking of pilot arc. Allows a rapid, distortion-proof cutting of all conductive materials such as steel, stainless steel, galvanised steel, aluminium, copper, brass, etc.

Characteristics:

- reduced weight and dimensions
- warning led for torch under voltage, protections
- torch automatic cooling
- visualization of air pressure
- thermostatic, overvoltage, undervoltage, overcurrent protections.



MASTERMIG 400

MIG-MAG/FLUX/BRAZING welding machine with removable wire feeder, fit for use in the industrial field. Flexibility of use with a wide range of materials such as steel, stainless steel, high strength steels and aluminium.

Characteristics:

- very strong
- numerous steps for regulation of arc voltage
- regulation of spot welding time
- two positions for reactance
- thermostatic protection.

Thanks to the extensions (optional) it is possible to increase the working range between wire feeder and power source up to 10 meters. Complete with MIG-MAG welding accessories.



TIG WELDING MACHINES

Microprocessor controlled, TIG (high frequency HF or LIFT striking), PULSE TIG and MMA inverter welding machine in direct and alternating current (AC/DC). Use with a wide range of materials such as steel, stainless steel, aluminium, titanium, copper, nickel, magnesium and their alloys.

Characteristics:

- TIG regulations: post gas, current down slope/time, bi-level, balance
- MMA regulations: arc force according to the type of electrode in use
- 2/4 times operation
- hot start and anti-stick devices
- remote control connector
- MMA electrodes: rutile, basic, stainless steel and cast iron
- thermostatic, overcurrent, overvoltage, undervoltage protections.



THREE-PHASE SUPPLY



ALPINE 50 BOOST 230V
Single-phase, portable battery chargers for charging lead-acid batteries with 12/24 v voltage. Protected against overloads and polarity reversal. Equipped with selector for normal or quick (boost) charge. Equipped with ammeter.



ALPINE 30 BOOST 230V
Single-phase, portable battery chargers for charging lead-acid batteries with 12/24 v voltage. Protected against overloads and polarity reversal. Equipped with selector for normal or quick (boost) charge. Equipped with Ammeter.



COMPUTER 48/2 PROF 230V 6-48V
Single-phase, portable, professional battery charger for charging all types of batteries with 6/12/24/36/48 v voltage. With automatic protection against overloads and polarity reversal. Allows simultaneous charging of several batteries in series. Equipped with ammeter and voltmeter.



DYNAMIC 320 START
230V 12-24V



ENERGY 1000 START
230-400V



DYNAMIC 420 START
230V 12-24V



DYNAMIC 520 START
230V 12-24V



DYNAMIC 620 START
230V 12-24V



ENERGY 1500 START
230-400

DC/AC CONVERTING SINGLE PHASE SUPPLY



CONVERTER 300



CONVERTER 70



CONVERTER 500



CONVERTER 1000

WELDING EQUIPMENTS AND ACCESSORIES

WELD ALLOY PRODUCTS



Product Range :

WA -60 10, WA-6013S, WA -70 16
WA-7018, WA-7018Al, WA-7018-1,
WA -7010-G, WA-8018-G, WA-80 18G,
WA -80 18B2, WA-80 18C-3, WA-90 18G
Weldinox-308 ,Weld inox-316. wetotnox-ZZCS .
weldino x-2553, EHTI Flux core wire

Weld Alloy Products. is an 150-9001 company manufacturing a wide variety of welding electrodes. These include Mild steel. Stainless steel, low alloy, high alloy, creep resistant. low hydrogen, hard facing, non ferrous, duplex steel, copper coated steel wires, stainless steel wires and filler wires. Weld Alloy Products are approved by Third parties like Lloyds Register of shipping, American Bureau of shipping, DNVetc.

Weld Alloy Products are also approved by Petroleum Development. Oman (POOL Aramco-Saudi Arabia). Weld Alloy Products find applications in industries like steel fabrication, cement, mining etc.

Mild Steel: WA 6013-S, A medium heavy coated . rutile type electrode usable in all positions. Welds are of radiographic quality .

WA 7024, A super heavy coated, iron powder type electrode ideal for weld ing mild steel structures, plant & machinery etc.

Pipe Welding: WA 6010, A light coated , cellulosic type electrode with a forceful. spray arc. Operates in all posit ions includ ing vert ical down position.

WA 7010 P1, A light coated , all position. cellu losic type elect rode with a forceful penetr at ing arc and a thin brittle slag which is easily removable.

Medium Tensile Steels: WA 7016, A medium-heavy coated, basic, low hydrogen type electrode producing a medium tensile and ductile weld metal for welding heavy sections in mild steel.

WA 7018, medium tensile steels and cast stee ls, Heavy coated . low hydrogen, iron type electrode produci ng tough & ductile welds of radiographic quality. Easyto oper ate in all positrons. Recommended for heavy joints under rest rain and joint s subject for dynamic loading.

Medium Tensile Steels: WA 7018 H4R, Basic coated, lowmoisturepick, up electrode.

Thecoating shows moistu re pick up of less than OAO%after exposu re to highly humid atmosphere for 9 hours. WA 7018-1, Heavy coated all position low hydrogen electrode producinga tough and ductile weld metal. The weld metal is of radiographic quality and displays remarkable impact strength at subzero temperatures down to -45°C.

Weathering Steels: WA 8018 W, Special electrode for welding crcten steel to corten steel.

High Tensile Steels: WA08018 C, Medium heavy coated. low hydrogen. iron powder type electrode for weldingof hightensile fine grained steels.

WA 8018 C3, Suitablefor welding Nickel bearingfine grained steels for service temperatures downto -60°C.

Creep Resisting Steels: WA 8018 B1, Suitable for welding Boilers. Chemical plants, oil refineries etc.
WA 8016 C3, Suitable for welding fine grained and Nickel steels for service at temperatures downto - 60°C.

Hard Facing: Weld Hard-III (Ih), Basic coated. hardfacingelectrode depositing an air hardeningtype weld metal havinghardnessin the range of 56-61HRC. Weld Hard-V, Medium heavy coated electrode. depositing an air hardeningtype weld metal which hasexcellnt resistance to severe abrasionwith moderate impact.

Cast Iron: Castalloy (FN), All position electrode depositing weld metal consisting of Nickel iron alloy, Ideally suited for maintenance and repair welding and for joiningof various types of cast irons including nodular cast iron.

Castalloy (Monel), All position electrode havinga core wireof Nickel-Copper alloy suitable for weldingcast irons without pre heating.

Castalloy (Ni), Pure Nickel electrode which displays a soft and stable arc on lowcurrents. The electrode producescrackfree machinable weldson grey cast iron.

Stainless Steels :

Weldinox- 308l, The weld metal hascontrolled ferrite

content between 4-8% and possesses excellent resistance to scaling at elevated temperatures upto 800°C.

Weldinox-316, The weld metal displays gooeco crack resistance. excellent creep strength and scaling resistance at hightemperatures upto 850°C.

Weldinox-2209, A Duplex stainless steel electrode with high strength with improved resistance to pitting attack, and to stress corrosion cracking,

Weldinox-2553, Super - Duplex stainless steel which has good general corrosion resistance in several corrosive media. Weld metal has high resistance to chloride induced stress corrosion cracking (CSCC).

S.S. TIG Filler Wire: TWA 308, It is an 18%Cr 8% Ni type filler wire for GTAW of austenitic corrosion resisting steel. It is suitable for welding of AISI 301.302,304 and equivalent grades of stainlesssteels. TWA 316, It is 18%Cr-12%Ni-2%Mo type filler wire for GTAW of AISI 316and similargrade of stainless steel.

MIG Welding Wire: MWA 70S-6, It is copper coated manganese - sntcon bearing wire for MIG welding. It is designed for all positional welding of structural steels pressure vessels.





NIKKO STEEL

BUILT ON

QUALITY & TECHNOLOGY

Nikko Steel was founded in 1972. In the early years, we produced about 500 metric tons of mild steel electrodes annually. Currently, the company has an annual capacity of over 12000 metric tons of quality electrodes featuring a comprehensive range of over 70 different types that cover welding applications in all major industrial sectors. PT Alam Iestari Unggul was certified ISO 9001 Quality Management System by Lloyd's Register Quality Assurance in 1996 and holds membership in several international welding institutes, societies and associations; demonstrating our commitment to quality and the advancement of welding technology.

Welding Electrodes for High Tensile Steels RD 360 AWS A5, 1 EE7016, JIS Z 3212

D5016

C 0.08 P 0.017, Si 0.53, S 0.013, Mn 1.10

Yield point: 50.2 kgf/mm² Tensile

Strength: 56.8 kgf/mm²

Elongation: 31.4%

Charpy Impact Value: 10.0 kgf-m (-290C)

Iron powder low hydrogen type electrode for heavy duty structures. Its hydrogen content of weld metal is very low, excellent mechanical properties. Deposition rate and welding efficiency is high, for various heavy duty structures. thick plate structures using 50kgf/mm class high tensile steel pipelines.

Welding Electrodes for Mild Steels RD 460 AWS A4, 1 EE6013, JIS Z 3211 D4313

C 0.09 P 0.021, Si 0.24, S 0.013, Mn 0.045

Yield point: 43.8 kgf/mm² Tensile

Strength: 53.7 kgf/mm²

Elongation: 27.6%

Charpy Impact Value: 9.01 kgf-m (00C)

High titania type electrode designed for high workability, good slag removal, beautiful bead appearance. For building constructions, marine, pipes, agricultural machinery, tank etc.

Welding Electrodes for Nickel Base Alloys NCF, AWS A5.11, ENiCrFe-3, JIS Z 3224, DNiCrFe-3-16

C 0.05, Fe 7.69, Si 0.30, Cr 14.7, Mn 7.58,

Nb 1.88, P 0.009, Mo 1.33, S 0.014, Ni Bal

Tensile Strength: 67.1 kgf/mm²

Elongation: 43.8%

Charpy Impact Value: 10 kgf-m (1960C)

Flux covered electrodes for all position except vertical down. Weld deposit is a nickel alloy with 66% Ni, 15% Cr, 7.5% Mn, 1.5% Mo, 8% Fe, 1.9% Nb. Welding of nickel chromium iron alloy medium and high carbon ferritic as ASTM B163, 166, 168



DaiSHIN

CORAL SELF PRIMING IRRIGATION PUMP

HG
HARD GEAR

FEATURES

Pump unit is made with precision mould aluminum, durable cast-iron volute, semi-open cast-iron impeller, mechanical (carbonic-ceramic) seal

APPLICATIONS

Suitable for general purpose
Pumping, irrigation, agricultural application, long distance water transportation, Cleaning, etc.



SCR-80HX

POWERED BY **HONDA**



SCR-80R

POWERED BY **Robin**



PERFORMANCE CURVES



SPECIFICATIONS

	SCR-80HX	SCR-80H	SCR-100	SCR-80R
Model	SCR-80HX	SCR-80H	SCR-100	SCR-80R
Flow Rate	80 m³/h (2" x 2")	80 m³/h (2" x 2")	80 m³/h (2" x 2")	80 m³/h (2" x 2")
Max. Head	20m	20m	20m	20m
Max. Power	1000W	1000W	1000W	1000W
Max. Flow	HONDA (4.0kW)	HONDA (4.0kW)	Robin (4.0kW)	Robin (4.0kW)
Max. Head	18m	18m	18m	18m
Max. Flow	80 m³/h	80 m³/h	80 m³/h	80 m³/h
Max. Power	4.0kW (5.5HP)	4.0kW (5.5HP)	4.0kW (5.5HP)	4.0kW (5.5HP)
Max. Flow	80 m³/h	80 m³/h	80 m³/h	80 m³/h
Max. Power	4.0kW (5.5HP)	4.0kW (5.5HP)	4.0kW (5.5HP)	4.0kW (5.5HP)
Max. Flow	80 m³/h	80 m³/h	80 m³/h	80 m³/h
Max. Power	4.0kW (5.5HP)	4.0kW (5.5HP)	4.0kW (5.5HP)	4.0kW (5.5HP)

OPEN FRAME TYPE

DAISHIN GENERATOR

SEA&SEB AVR **SERIES**



OPEN FRAME TYPE DAISHIN GENERATOR

Tough and durable open frame type generator with excellent AVR system



● Extremely durable (30) fuel/fuel control panel



3000



6000

● Simple and easy operation control panel (3000/6000)



● Large fuel tank with protective tank
● Simplified module structure for easy maintenance



● HONDA G4V 4-cylinder engine (GX series)



GE B7000H

● Low noise large muffler



SEB7000H

● New design air cleaner



SEB7000H

● New design air cleaner



SEB7000H

● New design air cleaner

ACCESSORIES: (A) instruction manual (B) Engine manual (C) Engine tools (D) Plug heads for each engine (E) Battery charge cable (except SEB2000H)

Model		SEA2000H	SEB2000H	SEB3000H	SEB3000H-H	SEB7000H	SEB7000H-H
Engine		HONDA					
Engine Model		GX160	GX160	GX160	GX160	GX200	GX200
Displacement (cm ³)		160	160	160	160	200	200
Max. Output (kW/HP) (5000Hz)		4.0/5.5	4.0/5.5	5.0/7.0	5.0/7.0	7.0/9.5	7.0/9.5
Type		M-Frame, 4-cylinder, OHV, Single-Engine, Air-cooled					
Oil Alert System		Standard (C.O.D.)					
Ignition System		Transistor (C.O.D.)					
Electric Start		Standard					
Generator		Self-excited, 2-Phase, Sine-Wave Type, Split Phase					
Voltage Regulator		AVR					
Power		Watts					
AC Max. Output (kW)	50Hz	3.3	3.3	4.0	4.0	5.5	5.5
	60Hz	3.3	3.3	4.0	4.0	5.5	5.5
	50Hz	3.3	3.3	4.0	4.0	5.5	5.5
AC Rated Output (kW)	50Hz	3.3	3.3	4.0	4.0	5.5	5.5
	60Hz	3.3	3.3	4.0	4.0	5.5	5.5
	50Hz	3.3	3.3	4.0	4.0	5.5	5.5
Wave Voltage		100V					
SFC (kWh/kVAh)		1.0/1.0					
Rated Power Factor		1.0					
Starting Method		Self-Starting (C.O.D.)					
Fuel Tank		Standard (C.O.D.)					
Fuel Tank Capacity (L)		15.0					
Continuous Operating Hours (100% Load)		10.0	10.0	10.0	10.0	10.0	10.0
Dimensions (mm) (LxWxH)		440x340x240	440x340x240	440x340x240	440x340x240	440x340x240	440x340x240
Dry Weight (kg)		20.0	20.0	20.0	20.0	20.0	20.0
Gross Weight (kg)		20.0	20.0	20.0	20.0	20.0	20.0

Specifications are subject to change without notice.

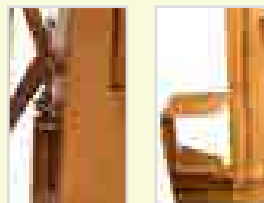
CONCRETE MIXER



3 Mixing Blades give greater mixing speed and amore homogeneous mix of cement and aggregates.



Simple yet strong design of hand tow bar provides high mobility in construction sites.



Rigid design of tilt lock for various mixing positions

CONCRETE CUTTER



TOKU Concrete Cutter with strong and simple design ensures accurate asphalt and concrete surface road cutting work. The design proven to be a reliable ,durable performer over years of service with contractors. The strong ,simple and well furnished concrete cutter series is a reliable equipment for users.

BLOCK CUTTER



TOKU BC-series Block Cutter will cut most paving materials available on the market made from concrete, clay, stone, granite, etc.

The cutting height is adjustable by a hand operated adjustment screw, which allows the sprung stop blade to fit snug to the tile surface. The canter lever action causes the cam to apply a uniform & central pressure which ensures that the machine is stable whilst in operation.

The hardened steel blades produce clean and perfect cuts, quickly and efficiently as well as having a long life.

EUROALPHA VIBRO

VIBRATORY PLATE COMPACTOR



CONCRETE TROWELLING MACHINE



VIBRATORY ROLLER



For queries & contact

AL KHALILI UNITED ENTERPRISES LLC

Handtools, Powertools and Industrial Equipments Division

P.O. Box 1869 I Ruwi I PC 112 I Sultanate of Oman

Tel. No. (+968) 220 35 000 Fax: (+968) 24613506

Email: info@alkhalili.com I buildingmaterial@alkhalili.com

www.alkhalili.com

GSM : (+968) 99443981 I (+968) 99221243

Email: : saleshw@alkhalili.com



مجموعة الخليلي
Al Khalili Group

Al-Khalili

BUILDex



**GENERAL HARDWARE,
SANITARY WARES AND PPE**



TRAMONTINA

PRODUCT Range :

- Sinks, Basins And Laundry Sinks
- Kitchen Products
- Laundry and Service Area
- Restroom Products

54

GENERAL HARDWARE, SANITARY WARES & PPE

Tramontina invites you to learn a little bit more about its history as a Brazilian company, since 1911.

Innovation, design, and technology plus, above all, human resources, laid the foundations for building this company. In Tramontina's view, people are the most important asset. Thus, it lays stakes its reputation on the expertise of its 6 thousand strong associate team.

Respect for differences and diversity are the pride and joy of the trademark which is soundly rooted in the most diverse area, and through each one of its 17 thousand products.

The value assigned to social awareness and the respect for the environment are major concerns that dictate the actions of the ten manufacturing units, which are always concerned with the welfare and the quality of life in the surrounding communities.

The brand that has won the hearts of the Brazilians is, today, present in over 120 countries.

Regard for the cultural differences in each one of these countries is one of the business principles of Tramontina. In this respect, it blends in-house values with local traditions, which generates a cohesive and harmonious organizational atmosphere in all its units around Brazil and the world.

A company can only reach such a threshold with the support of the associates and partners who share the same goal: customer and consumer satisfaction.

From the beginning of its journey, Tramontina has always relied on personnel and, little by little, has gradually gained confident and settled relevant partnerships that allowed for its growing market share and, above all, has cemented two-way respect relationships.

This is what Tramontina is about. Reliability, principles, partnership and respect, guide all of our business deals, with pro-active yields for the companies involved and also customers and consumers.

SANITARY WARES AND FAUCETS

- World Class Sanitary wares
- EN Standards
- Solid brass and Variety of Designs
- Made in Italy





56

GENERAL HARDWARE, SANITARY WARES & PPE

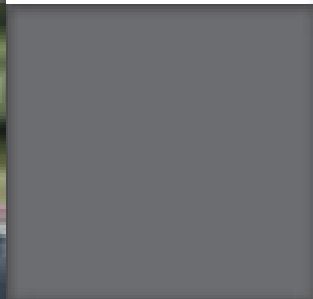
Mixers & Sanitary Ware

india - middle east - africa

SAFETY PRODUCTS



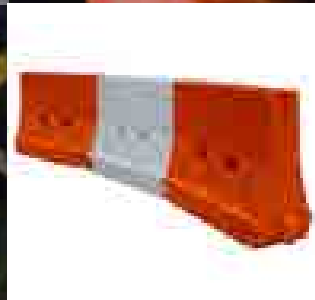
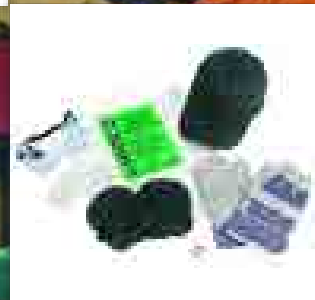
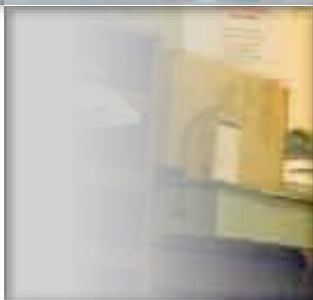
JSP manufacture a full range of personal protective equipment. Offering the complete solution to all your safety requirements. JSP are specialists in: Head protection, eye and face protection, hearing protection, respiratory protection, road safety products, janitorial products spill management products. With safety, comfort and style foremost in their minds. JSP manufacture affordable safety under an ISO 9002 Quality System. Al Khalili supply the PPE products to all the industries including construction, factories, oil and gas companies etc.



EURO ALPHA



EURO ALPHA, a brand developed by industry experts come up with almost all the PPE products. A brand strictly adherent to the BSEN standards. It caters all the major industries not limited to the constructions, Oil and Gas, Education and Training etc.





Safety Shoes
 Safety Shoes Accessories
 Technical Work Jackets
 Jackets
 Waistcoat
 Windproof Technical Attire
 Polo T-shirts And Shirts
 Adventure Line
 Technical Work Pants
 Work Overalls
 Underwear
 Safety Harnesses
 Fall Protection Lifelines
 Rolles System
 Clips And Connectors
 Fall Protection Kit For Scaffolding
 Protection Kit For Scaffolding
 Safety Line
 Work Helmets

Work Glasses
 Noise-protection Headphone
 Dust Protection Face Mask
 Work Gloves
 First Aid
 Tool Boxes
 Work Site Safety Signs
 Asc Panels
 Cable Winders
 Extension Leads and Cables
 Lighting Signs
 Ec Industrial Triple Adaptors
 Ec Industrial Adaptors
 Rubber Plugs and Sockets
 Ec Plugs and Sockets
 Multiple Sockets
 Lighting
 Civil Plugs And Sockets
 Disperser Poles, Clamps and Nets

PORTWEST®



60

GENERAL HARDWARE, SANITARY WARES & PPE

- High Quality personal protective brand
- BS EN Standards
- Made in UK
- Full Protective Range



PORTWEST.



GENERAL HARDWARE

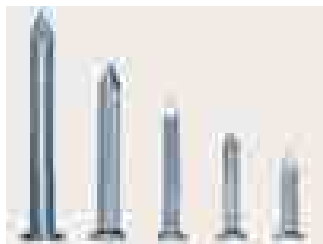
Al Khalili United Enterprises LLC maintains a huge inventory of general hardware items in order to help its customers meet their requirements at once. The easy availability of a wide range of items has made Al Khalili a preferred choice for customers. The company has

been able to win the loyalty of its customers by providing quality products at rock bottom prices. By importing its product range directly from reputed manufacturers in China, Taiwan, Indonesia, Thailand, Hong Kong, India, Italy, Poland, Brazil and Malta.

Al Khalili is able to offer extremely competitive prices on all its products



Steel nails



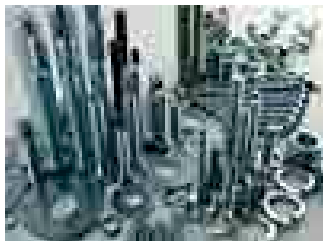
Wire nails



Tie Rods



Tie Rods



Fasteners



Polyethylene Sheet



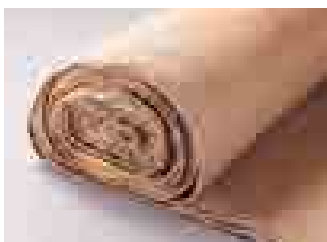
Polyethylene Sheet



Wing Nuts



Wing Nuts



Hessain Cloth 800 yard - 7 oz
& 250 yard - 4 oz

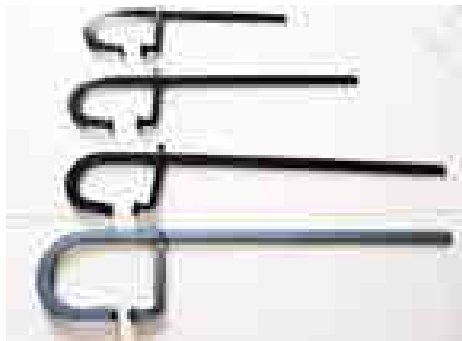


Binding Wires

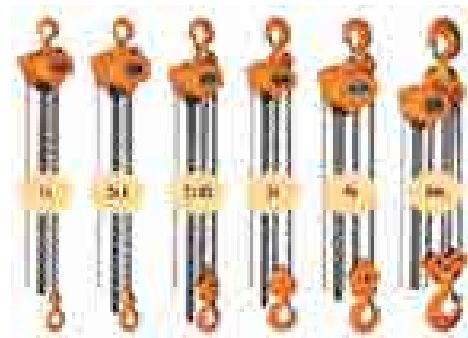


Binding Wires

GENERAL HARDWARE



Shuttering clamp 70 cm, 90 cm,
120 cm x 6 mm thickness



Chain Blocks



Euro Alpha Wheel Barrow



Water Filter (Sosafe, Aqua)



Water Filter (Sosafe, Aqua)



Water Heaters (Hotex, Dhafi)



Water Cooler (Cosmoplast)



GURBETÇİLER

Made in Turkey

Since 1985

**CONNECTION POINT OF THE
EXPERIENCE AND TECHNOLOGY**

64

GENERAL HARDWARE, SANITARY WARES & PPE



PASPAYI
"Connection point of the experience and technology"



▶ PLASTIC SPACER

CURTAIN AND COLUMN TYPE PLASTIC SPACER

Model	Dimensions mm	Weight kg	Dimensions mm	Weight kg	Material	Price TL
0010110408	19,7 / 4 / 8	10	4 / 8	0,000	plastic	11,8
0010110154	19,7 / 8 / 14	10	11 / 14	0,000	plastic	11,3
0010110408	15,7 / 4 / 8	10	4 / 8	0,000	plastic	11,1
0010110412	15,7 / 4 / 12	10	4 / 12	0,000	plastic	11,8
0010200612	25,7 / 4 / 12	20	4 / 12	0,000	plastic	11,8
0010200612	25,7 / 4 / 12	20	4 / 12	0,000	plastic	12,8
0010251418	25,7 / 4 / 18	25	14 / 18	1,500	plastic	14,2
0010300812	30,7 / 8 / 12	20	8 / 12	0,000	plastic	13,2
0010301420	30,7 / 4 / 20	30	14 / 20	0,000	plastic	14,2
0010300812	30,7 / 8 / 12	20	8 / 12	0,000	plastic	13,8
0010401214	40,7 / 12 / 14	40	12 / 14	0,000	plastic	10,8
0010500414	35,7 / 4 / 14	30	4 / 14	0,000	plastic	11,4
0010501832	35,7 / 18 / 32	30	18 / 32	0,000	plastic	13,2
0010402814	40,7 / 8 / 14	40	8 / 14	0,000	plastic	9,8
0010100814	25,7 / 8 / 14	25	8 / 14	0,000	plastic	9,8
0010100024	25,7 / 24 / 24	25	20 / 24	0,000	plastic	9,8

PILC CASE TYPE PLASTIC SPACER

Model	Dimensions mm	Weight kg	Dimensions mm	Weight kg	Material	Price TL
0100000812	10,7 / 8 / 12	50	8 / 12	100	plastic	10,8
0100000014	20,7 / 8 / 14	70	8 / 14	100	plastic	9,8
0100000812	20,7 / 8 / 12	70	8 / 12	100	plastic	11,8
0100000814	20,7 / 8 / 14	70	8 / 14	100	plastic	9,8
0100000814	20,7 / 8 / 14	70	8 / 14	100	plastic	9,8
0100000812	30,7 / 8 / 12	100	8 / 12	100	plastic	10,8
0100001214	30,7 / 12 / 14	100	12 / 14	100	plastic	10,8
0100000020	100,7 / 20 / 20	100	20 / 20	100	plastic	10,8
0100001014	100,7 / 10 / 14	120	10 / 14	100	plastic	8,2

PNE-CAST TYPE PLASTIC SPACER

Model	Dimensions mm	Weight kg	Dimensions mm	Weight kg	Material	Price TL
0100000020	8 / 2 / 2	8	2 / 2	10,000	plastic	2,4
0100000020	25 / 2 / 2	25	2 / 2	10,000	plastic	5,3
0100000020	8 / 2 / 2	8	2 / 2	5,000	plastic	2,4

FLOOR-CURTAIN TYPE PLASTIC SPACER

Model	Dimensions mm	Weight kg	Dimensions mm	Weight kg	Material	Price TL
0000000418	25 / 4 / 18	25	4 / 18	2,500	plastic	20,2
0000000418	30 / 4 / 18	30	4 / 18	2,500	plastic	14,7
0000000420	30 / 4 / 20	40	4 / 20	700	plastic	11,4

HOOKED TYPE PLASTIC SPACER

Model	Dimensions mm	Weight kg	Dimensions mm	Weight kg	Material	Price TL
0000000020	Hooked 20	20	8	1,500	plastic	11,8
0000000020	Hooked 20	20	8	1,500	plastic	15,4
0000000020	Hooked 20	20	8	1,500	plastic	12,3
0000000020	Hooked 20	20	8	1,500	plastic	12,3

CLOTHESPIN TYPE FLOORING PLASTIC SPACER

Code	Dimensions (mm)	Weight (g)	Dimensions (mm)	Weight (g)	Material	Price (₹)
6000120418	12.7 x 4 x 10	12	4 x 10	4.500	plastic	11.8
6000120612	15.2 x 6 x 12	15	6 x 12	3.200	plastic	11.8
6000200618	20.7 x 6 x 18	20	6 x 18	2.500	plastic	13.8
6000250618	25.7 x 6 x 18	25	6 x 18	2.500	plastic	14.0
6000300618	30.7 x 6 x 18	30	6 x 18	2.200	plastic	13.7
6000001620	30.7 x 6 x 20	30	14 x 20	1.800	plastic	12.5
6000080618	35.7 x 6 x 18	35	6 x 18	2.700	plastic	13.5
6000001622	35.7 x 6 x 22	35	14 x 22	1.600	plastic	12.4
6000400618	40.7 x 6 x 18	40	6 x 18	2.200	plastic	14.0
6000000618	45.7 x 6 x 18	45	6 x 18	1.500	plastic	12.4
6000001822	45.7 x 18 x 22	50	18 x 22	300	plastic	15.8
6000001020	50.7 x 10 x 20	75	10 x 20	300	plastic	10.6



ELEGANT TYPE FLOORING PLASTIC SPACER

Code	Dimensions (mm)	Weight (g)	Dimensions (mm)	Weight (g)	Material	Price (₹)
6000101218	15.2 x 12 x 18	15	12 x 18	1.000	plastic	13.0
6000001418	20.7 x 14 x 18	20	14 x 18	1.000	plastic	14.2



ELEGANT TYPE FLOORING PLASTIC SPACER

Code	Dimensions (mm)	Weight (g)	Dimensions (mm)	Weight (g)	Material	Price (₹)
6400000800	20.7 x 8 x 20	28	8 x 20	2.500	plastic	13.7
6400000800	21.1 x 8 x 20	28	8 x 20	2.500	plastic	15.9
6400000800	22.1 x 8 x 20	28	8 x 20	2.500	plastic	16.9



FLAT TYPE FLOORING PLASTIC SPACER

Code	Dimensions (mm)	Weight (g)	Dimensions (mm)	Weight (g)	Material	Price (₹)
6400001810	40.7 x 10 x 10	40	10 x 10	1.500	plastic	17.0



FLAT-BASED TYPE FLOORING PLASTIC SPACER

Code	Type	Dimensions (mm)	Weight (g)	Dimensions (mm)	Weight (g)	Material	Price (₹)
6000150510	Type 1	15	5 x 10	30x30	2.500	plastic	12.7
6000200614	Type 1	20	6 x 14	30x34	1.500	plastic	13.8
6000300614	Type 1	30	6 x 14	35x30	1.000	plastic	14.2
6001520618	Type 2	15.7 x 20	6 x 18	101	63	plastic	6.0
6002030618	Type 2	20.7 x 30	6 x 18	114	60	plastic	7.2
6004000618	Type 2	40.7 x 50	6 x 18	120	300	plastic	9.1
6006000618	Type 2	60.7 x 60	6 x 18	127	300	plastic	9.8
6004070618	Type 2	60.7 x 70	6 x 18	136	300	plastic	12.2
6007000618	Type 2	70.7 x 80	6 x 18	140	200	plastic	9.7
6009000618	Type 2	90.7 x 100	6 x 18	150	100	plastic	9.2



TABLE TYPE FLOORING PLASTIC SPACER

Code	Dimensions (mm)	Weight (g)	Dimensions (mm)	Weight (g)	Material	Price (₹)
6000001818	25.7 x 18	25	8 x 18	1.500	plastic	20.0



CHAIR TYPE FLOORING PLASTIC SPACER

Code	Dimensions (mm)	Weight (g)	Dimensions (mm)	Weight (g)	Material	Price (₹)
6400150620	15.7 x 6 x 20	15	6 x 20	1.000	plastic	8.7
6400200620	20.7 x 6 x 20	20	6 x 20	1.000	plastic	9.0
6400250620	25.7 x 6 x 20	25	6 x 20	900	plastic	7.7
6400300620	30.7 x 6 x 20	30	6 x 20	750	plastic	7.9
6400350620	35.7 x 6 x 20	35	6 x 20	700	plastic	8.7
6404000620	40.7 x 6 x 20	40	6 x 20	600	plastic	8.0
6405000620	50.7 x 6 x 20	50	6 x 20	500	plastic	7.0





NORM TYPE FLOORING PLASTIC SPACER

Model	Length	Width	Height	Weight	Unit	Price
045000004	25 / 8 - 24	25	8 - 24	1.000	pieces	14,5
045000004	25 / 8 - 24	25	8 - 24	1.000	pieces	15,5
046000004	25 / 8 - 24	25	8 - 24	750	pieces	14,0
046000004	25 / 8 - 24	25	8 - 24	750	pieces	15,0
045000004	40 / 9 - 24	40	9 - 24	400	pieces	16,0
046000004	50 / 9 - 24	50	9 - 24	300	pieces	16,0
046000004	60 / 9 - 24	60	9 - 24	300	pieces	15,0
046000004	70 / 9 - 24	70	9 - 24	400	pieces	14,0



HARD TYPE NORM FLOORING PLASTIC SPACER

Model	Length	Width	Height	Weight	Unit	Price
044000000	25 / 20 - 20	25	20 - 20	250	pieces	16,0
044000000	25 / 20 - 20	25	20 - 20	250	pieces	15,0
044000000	100 / 20 - 20	100	20 - 20	250	pieces	14,0



CIRCULAR TYPE FLOORING PLASTIC SPACER

Model	Length	Width	Height	Weight	Unit	Price
070000000	15 x 75	15	75	500	pieces	12,0
070000000	30 x 200	30	200	200	pieces	12,0
070000000	35 x 200	35	200	300	pieces	20,0
070000000	30 x 200	30	200	250	pieces	14,0
070000000	40 x 200	40	200	300	pieces	14,0



PARALLEL TYPE PLASTIC SPACER

Model	Length	Width	Height	Weight	Unit	Price
070000000	25 x 210	25	210	100	pieces	8,0
070000000	30 x 210	30	210	800	pieces	10,0
070000000	25 x 210	25	210	800	pieces	10,0
070000000	30 x 210	30	210	300	pieces	8,0
070000000	40 x 210	40	210	300	pieces	9,0



PROFILE TYPE PLASTIC SPACER

Model	Length	Width	Height	Weight	Unit	Price
080000000	25 x 200	25	200	100	pieces	10,0
080000000	40 x 200	40	200	100	pieces	11,0
080000000	50 x 200	50	200	100	pieces	12,0



ZIG ZAG TYPE FLOORING PLASTIC SPACER

Model	Length	Width	Height	Weight	Unit	Price
090000000	25 x 1000	25	1000	50	pieces	4,0
090000000	30 x 1000	30	1000	20	pieces	4,0



CONTAIN IMAGE/PEEL TYPE PLASTIC SPACER

Model	Length	Width	Height	Weight	Unit	Price
100000000	20	20	200	100	pieces	8,0
100000000	25	25	200	100	pieces	8,0



CORK FLOORING STEEL PLASTIC SPACER

Model	Length	Width	Height	Weight	Unit	Price
110000000	20	20	200	100	pieces	8,0
110000000	25	25	200	100	pieces	8,0

AUXILIARY FORM MATERIALS PLASTIC CATEGORY ◀

SPECIAL HUBS FOR TIE-RODS TO BE LEFT IN CONCRETE

Code	Dimensions	Weight	Length	Volume	Material	Price	
1300100040	8 x 40	8	40	30	1.000	pieces	9,0
1300100040	10 x 40	10	40	30	1.000	pieces	9,0
1300100050	12 x 50	12	50	40	1.000	pieces	9,0
1300100040	17 x 40	12	40	30	1.000	pieces	9,0
1300100040	14 x 40	14	40	30	1.000	pieces	9,0



TIE-ROD PROTECTIVE PIPE (HUB PLUGGED TYPE)

Code	Dimensions	Weight	Length	Volume	Material	Price
1400054000	25	20	25	1.000	pieces	15,0
1400052000	30	25	30	1.000	pieces	12,0
1400053000	40	30	40	1.000	pieces	15,0



REDUCTION (WATER STOPPER'S CAP)

BIBLIOGRAFIA							
BIBLIOGRAFIA							
1300054000	Reduction	20	20	20	1.000	pieces	9,0



TIE-ROD PROTECTIVE PIPE HUB-CONE HUB

Code	Dimensions	Weight	Length	Volume	Material	Price
1400051000	25	18	25	1.000	pieces	7,0
1400051500	30	19	30	1.000	pieces	10,0
1400052000	30	20	30	1.000	pieces	7,4
1400053000	30 (with 10mm gap)	30	30	1.000	pieces	6,4



TIE-ROD PROTECTIVE PIPE

Code	Dimensions	Weight	Length	Volume	Material	Price
1400051000	25	18	25	900	pieces	7,4
1400052000	30	20	30	900	pieces	12,4
1400053000	30	20	30	900	pieces	20,4
1400052000	30	20	30	900	pieces	19,2



TIE-ROD PROTECTIVE PIPE

Code	Dimensions	Weight	Length	Volume	Material	Price	
1400050000	20 cm	20	20	100	150	pieces	4,8



TIE-ROD PROTECTIVE CONE PIPE

Code	Dimensions	Weight	Length	Volume	Material	Price
1400050010	18 cm	17 x 24	30 x 30	20 x 27	25 x 40	100 pieces 16,0
1400050020	20 cm	17 x 24	30 x 30	20 x 27	25 x 40	100 pieces 23,0
1400050030	25 cm	17 x 24	30 x 30	20 x 27	25 x 40	100 pieces 25,0
1400050030	30 cm	17 x 24	30 x 30	20 x 27	25 x 40	100 pieces 29,0
1400050030	35 cm	17 x 24	30 x 30	20 x 27	25 x 40	100 pieces 41,0
1400050040	40 cm	17 x 24	30 x 30	20 x 27	25 x 40	75 pieces 30,0
1400050045	45 cm	17 x 24	30 x 30	20 x 27	25 x 40	60 pieces 30,0
1400050050	50 cm	17 x 24	30 x 30	20 x 27	25 x 40	50 pieces 33,0
1400050060	60 cm	17 x 24	30 x 30	20 x 27	25 x 40	50 pieces 43,0





AUXILIARY FORM MATERIALS PLASTIC PLUG CATEGORY



PLUGS FOR HOLES ON FORMS

Code	Designation	Ø	h	Weight	Material	Unit
190007222	22 mm Cone Plug	22	37	1,000	piece	2.8
190007227	27 mm Cone Plug	27	25	1,000	piece	4.0
190008228	28 mm Cone Plug	28	25	1,000	piece	4.0
190014234	34 mm Cone Plug	34	25	1,000	piece	5.8
190019010	7 x 70 mm PVC Plug	7	20	2,500	piece	7.8
190021020	12 x 20 mm PVC Plug	12	20	1,500	piece	2.2
190050008	20 x 32 mm PVC Plug	20	32	1,000	piece	12.9
190010040	29 x 40 mm PVC Plug	29	40	1,000	piece	21.2
190048042	48 x 42 mm PVC Plug	48	42	500	piece	24.0
190010042	52 x 42 mm PVC Plug	52	42	500	piece	24.0
200102228	18 mm Plywood Hole Plug	22	30	1,000	piece	1.0
200020020	25 mm Plywood Hole Plug	25	30	1,000	piece	1.0
200100008	25 mm Healer Type	25	25	100	piece	2.0
200104020	35 mm Healer Type	42	35	500	piece	3.0
200200042	42 mm Healer Type	49	27	500	piece	10.0
200204040	48 mm Healer Type	49	30	500	piece	3.0
200000008	10 mm Healer Type	38	30	1,000	piece	11.0
200100008	10 mm Healer Type	42	30	250	piece	8.0
200007008	10 mm Healer Type	38	20	250	piece	8.0
210004002	42 mm Exteriorly Insulated	44	25	1,000	piece	12.4
210004004	48 mm Exteriorly Insulated	54	30	500	piece	12.0
210004006	60 mm Exteriorly Insulated	64	25	500	piece	18.0
210007006	70 mm Exteriorly Insulated	77	24	500	piece	22.0



AUXILIARY FORM MATERIAL PROFILE CATEGORY



SPACING LATHS

Code	Ø	h	Weight	Material	Unit	
240010100	20	118	60	500	meters	14.0
240011100	25	117	60	500	meters	12.0
240010108	20	108	60	350	meters	20.8
240000100	20	20	18	500	meters	10.0
240004100	20	4	60	500	meters	30.0
240000048	48	20	20	50	meters	4.4
240010020	60	118	22	50	meters	4.4

T-PROFILES

Code	Ø	h	Weight	Material	Unit
240000100	20	18	180	meters	4.8
240000108	25	18	180	meters	13.8

PLYWOOD ASSEMBLY PROFILE

Code	Ø	h	Weight	Material	Unit	
200010118	30	38	18	500	meters	18.0
200010020	30	38	20	500	meters	12.0
200010025	30	38	20	500	meters	14.0
200010026	30	38	20	500	meters	17.0

TRIANGLE BEVELING PROFILE

Part No.	Thickness	Height	Width	Length	Weight	Material	Price
2400101010	10	10	10	10	100	stainless	10.0
2400151010	15	15	15	20	150	stainless	12.0
2400181010	20	18	18	25	150	stainless	17.0
2400201010	20	20	18	30	150	stainless	22.0
2400251010	25	25	18	35	150	stainless	25.0
2400281010	40	28	18	40	150	stainless	34.0
2400301010	30	30	20	50	75	stainless	33.0

**TRIANGLE BEVELING PROFILE WITHOUT FLANGE**

Part No.	Thickness	Height	Width	Length	Weight	Material	Price
2410101010	10*10	10	10	10	100	stainless	4.3
2410151010	10*15	10	15	20	150	stainless	9.5
2410181010	10*20	10	18	25	150	stainless	12.6
2410201010	10*20	20	20	30	150	stainless	18.5
2410251010	10*25	25	25	35	150	stainless	19.6
2410281010	10*30	28	28	40	150	stainless	25.0
2410301010	10*30	30	30	50	75	stainless	32.2

**SQUASH SURFACE CONCRETE JOINTING PROFILE**

Part No.	Thickness	Height	Width	Length	Weight	Material	Price
2700000000	25	4	4	Support Size		stainless	

**PANEL OF CONCRETE**

Part No.	Thickness	Height	Width	Length	Weight	Material	Price
2700000010		40		30		stainless	5.8
2700000020		50		30		stainless	11.8

**PRIE-CAST STEEL DOOR SEALING BASKETS**

Part No.	Thickness	Height	Width	Length	Weight	Material	Price
2800100000	1	10	20	20	10	stainless	10.0
2800100010	1	10	20	25	13	stainless	10.0
2800101020	1	10	20	30	13	stainless	10.0
2800100015	1	11	11	25	10	stainless	10.0
2800101020	1	16	16	25	13	stainless	10.0
2800101022	1	22	16	25	18	stainless	10.0
2800101025	1	16	22		10	stainless	14.2
2800101026	1	18	18		14	stainless	11.8
2800101027	1	18	23		16	stainless	12.8
2800102014	1	20	11		60	stainless	28.8



PS **PROSPEC**[®]
SPECIALTIES
ARCHITECTURAL & ENGINEERED SYSTEMS

Made in Canada



architectural expansion joint sealing products

- **INTERNAL / EXTERNAL JOINT COVERS**
- **FIRE RATED JOINT COVERS**
- **BRIDGE DECK JOINT COVERS**



Prospect Specialties manufactures a wide range of architectural specialties, all designed to meet specific needs. Our durable and attractive range of expansion joint cover systems offer versatile design options for interior and exterior applications.

Prospect offer covers that can be finished to perfectly match the floor, wall, ceiling or roof. Whatever the surface, Prospect covers can seal and blend beautifully into surrounding environment. Prospect Expansion joint cover systems are available in a variety of metals and finishes. If the requirement is of fire-rated capability, Prospect fire barriers can be incorporated into most of expansion joint cover systems.

Solving Complex as well as simple building movement problems for years

Pidilite
PRODUCT RANGE



ADHESIVE, WOOD FINISHES, SEALANTS



FEVICOL SH
SYNTHETIC RESIN ADHESIVE

The Ultimate Adhesive



FEVICOL SH is Poly Vinyl Acetate (PVAc) based special grade Wood Glue with superior and fine tested international quality. It is available in the form of ready-to-use glue in the form of white water based.

Applications:

- To bond white, plywood, teakwood, veneers, particleboard, fibre-board, hard board, MDF.
- For joints & joints good manufacturing, paper-bonding, wall paper & canvas.
- Recommended for bonding any two materials where all features of them is present e.g. paper, card board and several applications.

Features & Benefits:

- Unsurpassed bonding strength once completely dried & set up.
- Water & heat resistant.
- Economical in the long run.
- Gives a higher coverage area.

Packing Units:
Plastic Containers: 100 g, 250 g, 500 g, 1 kg, 2 kg, 5 kg and 10 kg.
Cans: 10 kg, 20 kg, 50 kg, 70 kg, 100 kg, 200 kg.





BULBOND WK is Poly Vinyl Acetate (PVAc) based Wood Glue for bonding wood, veneer, wooden partitions, Formica, thermoplastic, etc. Its superior formulation contains high strength and international quality as an affordable price.

Applications:

- Wooden frame joints in table.
- External & internal wall panels.
- Join panels.

Features & Benefits:

- Convenient for large area application by brush and roller.
- Offer economy in consumption.
- Water resistant and multipurpose wood glue with some 'saccharose' amongst wood particles in the formulation for better.
- Environmentally safe and clean.

Packing:
Plastic Containers: 250g, 500g, 1000g, 1kg, 5kg and 10kg.
Cans: 20kg, 50kg, 10kg, 100kg and 200kg.



BULBOND WK
Synthetic Resin Adhesive

Economical Wood Glue



FEVICOL CA-777
General Purpose Contact Adhesive



FEVICOL CA-777 is Synthetic Rubber Based Contact Adhesive to bond laminates, wood, plywood, rubber, marble, marble tiles, floor, glass, ceramic, granite etc.

Applications:

- To make upholstery of chairs, sofa, bed etc.
- To bond decorative laminates in wood and plywood.
- PVC and paper flooring.
- Electronic Dust Insulator.

Features & Benefits:

- Gives down significant time in furniture making, better economy efficiency.
- Perfect contact glue to bond surfaces where it is difficult to apply (sandpapered for better adhesion).
- Can be used for a wide range of applications on variety of surfaces.

Packing Units:
Tins: 200 ml, 500 ml, 850 ml, 1kg and 1.5kg (approx).





FEVICOL Supreme is a premium quality high bond resistant synthetic rubber based contact adhesive. It is a very fast drying with a lifetime free.

Applications:

- To bond decorative laminates, veneers and wood to wood and plywood.
- Plaster, marble, rubber, floor, floor, floor, glass, ceramic, granite and many more applications.
- To bond vinyl flooring on the wall.
- Electronic insulator & jewelry etc manufacturing.

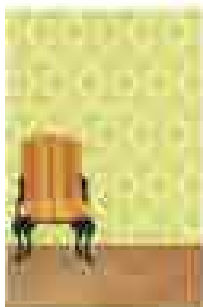
Features & Benefits:

- Can be used for exterior surfaces exposed to sunlight and in high conditions.
- Very fast drying, making it suitable for vertical applications.
- Resists heat, acid, corrosion, fungus, insects, washing, etc. contact.

Packing Units: Tin container: 400 ml, 1kg, 1.5kg, 2kg, 5kg and 10kg.



FEVICOL SUPREME
Premium grade synthetic based contact adhesive.



Fevicol Wall Fix is a water-based adhesive for the smooth plaster and it can be easily removed when the walling is done.

Application:
For finishing paper covering of wall before wallpaper is laid.

Features & Benefits:
• Plaster finish
• Water based
• No odor and pH / Moisture friendly adhesive
• Removable when plastering is complete



Wall Fix
WATER BASED WALL PAPER ADHESIVE

FEVICOL
KG
KWIK GRAB
CONSTRUCTION ADHESIVE

High Strength
Multi Purpose Adhesive

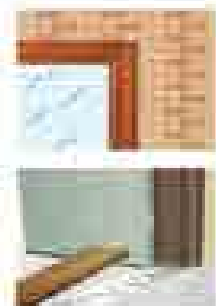


Fevicol KG Kwik Grab Construction Adhesive is a high strength multipurpose adhesive to bond almost all building materials. It gives an instant grab and provides a long lasting durable bond.

Applications:
Wooden frame work, battens and ceiling, wall cladding boards and panels, wood, plywood, laminated particle board, brick, flooring, floor sections, decorative frames, wall cladding and many more.

Features & Benefits:
• Gives instant grab and forms a long lasting elastic bond.
• Good for use in construction materials.
• Fast drying to provide strong bond.
• Easy to use and apply.

Packing Unit:
Cartridge 300 ml



Fevicol 1k PUR is a single component moisture curing polyurethane adhesive. It has high water resistance. It is per DIN EN 204 and high temperature resistance as per ISO 7781.

Applications:
Solid wood to wood, Wood to wood assembly, laminates, plywood, light particle board, concrete and ceramic.

Features & Benefits:
• Very high water resistance. Can be used in areas exposed to moisture and steam.
• Complies to EN 20404 and ISO 20403 standards for drying under resistance.
• Does not give strong bond.
• Easy to use and apply.

Packing Unit:
Plastic Bottle 300 g
Metal canister 1 kg, 20 kg



FEVICOL
1k PUR Adhesive

Moisture Curing
1k Polyurethane Adhesive



Fevicol Marble Glue is a 2-component adhesive specially designed for bonding Marble, Granite, Quartz, and other hard to bond surfaces like walls. It is also suitable to repair any manufacture of Marble and Granite articles.

Applications:

- Marble and Granite on Floor
- Marble and Granite on walls
- Glass fitting and repair on Marble walling

Features and Benefits:

- High strength, industrial assembly designed for Marble and Granite
- Viscous, Filling (Appl. for Glass fitting)
- Heavy Spill (for the perfect texture)
- Ideal for outdoor applications on the exterior
- Easy applicability and easy to use

Packing Unit:

750 ml Bottle + 25 g Nozzle
net 27.5 kg Bottle + 200 g Nozzle



Wudfin PU 11 is a single component, air drying polyurethane based wood finish for furniture and other glass and metal finish and preserves any property, wood and also enhances the natural beauty of wood grain.

Applications:

- For all types of woodwork furniture and other
- For MDF, veneer, and wood and others
- For window, window frames, doors, metalwork, etc.

Features & Benefits:

- More prime
- Faster drying
- Heat and water resistant
- More resistant to scratches
- Prevents existing and dissolves naturally of
- MDF particle boards
- Good adhesion from other

Attractive colours:

Walnut, Teak, Oak, Yellow, Walnut & Redwood

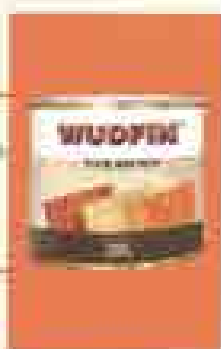
Packing Unit: 200 ml, 500 ml, 1 Lit and 4 Lit



WUDFIN
PU 11
POLYURETHANE FINISH



WUDFIN
PLASTIC WOOD FILLER



Wudfin Plastic Woodfiller is a painting wood to fill holes, gaps, fissures and cracks on wood for interior as well as exterior use. It is a water-soluble, air-drying, fast to use, and easy to use and can be sandpapered and coloured.

Applications:

- Can be used in most types of wood
- Can be filled with sandpapering (best effect)

Features & Benefits:

- Good for wood
- Compatible with most paints
- Fast to use and apply

Packing Unit:

For container: 444 kg and 100 kg



Wudfin Woodstain is a long-lasting stain for wood. It is a water-soluble stain (oil) Wudfin Woodstain for the wood grain and adds the wood fiber and highlights the wood grain structure. Wudfin Woodstain is available with Water-based solvent for the long-lasting stain.

Applications:

- Can be used on most types of wood
- To be applied with brush, roller, spray
- Also in spraying and staining

Features & Benefits:

- High quality and long-lasting stain
- Compatible with Water-based solvent
- Highlights the wood grain structure
- Easy to use and apply

Packing Unit: 1000 ml / 1 Lit



WUDFIN
Woodstain
Water-based

UNITINT® UNIVERSAL STAINER

For Enamel And
Water Based Paints



Unitint Universal Stainer is a high strength, non-soluble, grade standard (JIS K550) and is used for all drying or drying containers, pipes or heat transfer pipes. It is not recommended for use in moving and vibrating color coated parts.

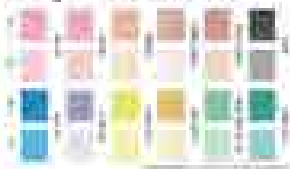
Applications

To clean and prevent staining

Features & Benefits

- High drying strength
- Universal all drying and drying agents
- Light fast
- Durable

Packing Size: 500 ml, 1000 ml and 2000 ml



UNIVERSAL STAINER
Unitint Universal Stainer is a
universal all drying and
drying agents.



Cera Clean

Roff Cera Clean is a high quality, detergent based cleaner and degreasing solvent (JIS K550) for use in the bath, toilet, wash basin, sink, floor and swimming pool. It is used to remove dirt and grime from the bathroom under glass and metal surfaces. It is not recommended for use on stone or marble. It is used to remove dirt and grime from the bathroom under glass and metal surfaces. It is not recommended for use on stone or marble. It is used to remove dirt and grime from the bathroom under glass and metal surfaces. It is not recommended for use on stone or marble.

Areas of Application

- Cleaning of surfaces of bath, toilet, wash basin, sink, floor and swimming pool, where efficient cleaning is required.
- As a detergent for cleaning the surface before application of other products.
- Cleaning of swimming pool, bath, toilet, sink, wash basin, etc.

Features & Benefits

- Removes stains easily
- Degreases the dirt surface easily
- Cleans the surface without the need of application

Packaging: 1 Liter

Dr. Fixit 501 Silicone Sealant is a one-part, high modulus and single component silicone sealant. It is a highly elastic, adhesive, and is used for all types of joints, gaps, and cracks in glass, ceramic and sanitary ware etc.

Applications

Use Dr. Fixit 501 Silicone Sealant for all types of joints, gaps, and cracks in glass, ceramic and sanitary ware etc. It is a highly elastic, adhesive, and is used for all types of joints, gaps, and cracks in glass, ceramic and sanitary ware etc.

Features & Benefits

- Ready to use, white line - clear sagging
- Flexible in use and high resistance
- Fast cure even temperature cure
- No primer is required when sealing joints in glass, ceramic and sanitary ware
- Forms tough, durable and elastic joint
- Low shrinkage, joint life increases & prevents cracking
- Shelf life: 1 year

Packing Size: 250 ml plastic cartridge with automatic nozzle

Technical Information

- Curing Time: 10-15 min
- Curing Time: 10-15 min
- Curing Time: 10-15 min
- Curing Time: 10-15 min
- Curing Time: 10-15 min
- Curing Time: 10-15 min
- Curing Time: 10-15 min
- Curing Time: 10-15 min
- Curing Time: 10-15 min
- Curing Time: 10-15 min

Storage / Coverage

- Store in a cool, dry place
- Store in a cool, dry place
- Store in a cool, dry place
- Store in a cool, dry place
- Store in a cool, dry place
- Store in a cool, dry place
- Store in a cool, dry place
- Store in a cool, dry place
- Store in a cool, dry place
- Store in a cool, dry place



G* GRASS DRAWER SLIDE SYSTEM

A brand that is known the world over: For more than sixty years, Grass has been one of the leading international manufacturers of furniture fittings and process machines. Slide and hinge systems by Grass are fitted to furniture of well-known, industrially produced premium brands and are used by high-quality craft workshops. GRASS allows manufacturers to design their high-quality furniture with even more style, better function and comfort, and at the same time to produce it even more efficiently. Excellent quality. The basis of high customer satisfaction of furniture manufacturers and consumers. Our customers in the furniture industry and in high-quality craft workshops rely on us. We accept this responsibility and make sure that our fitting systems give many years of faultless function. The products testing is governed by internal standards, test procedures as described in DIN ISO and tests by independent institutes in order to achieve systematic quality assurance.

Hinge Systems

- Nexis Click-on
- Nexis Impresso
- Nexis Slide-on
- Illuxo for Nexis hinges
- Snap On 3000
- Snap On 3000 Airmatic
- Snap On 3000 Multi lock

Twist Lock 4000

- Hinges for special applications

Opening systems

- Sensotronic
- Tipmatic Plus for drawer systems
- Tipmatic Plus for hinge systems
- Tipmatic for handle-free furniture

NOVA PRO DRAWER SLIDES

Superior Grass gliding action
Low pullout force
Fully extendable with Airmatic cushioning integrated into the slide system
Load capacity up to 40 kg and 70 kg
Full drawer extension from 270-600mm for 40kg capacity
and from 450-650mm for 70kg capacity.
Side stability and absolute overall stability



Drawer Slide Systems

- Nova Pro Classic
- Nova Pro Deluxe
- Nova Pro Crystal
- Nova Pro Inox

DWD DRAWER SLIDES



Synchronized full-extension drawer runner for drawers and pan drawers.
Integrated Soft-close technology
Excellent movement characteristics
Load capacity up to 40 kg and 60 kg (and 80 kg on request)
Low drop values
Full drawer extension from 275-550mm for 40kg capacity and from 450-650mm for 60kg capacity.
High side stability

- DWD-Dynamic-XP
- DWD XP Agantis
- Dynamic NT
- Interwood
- Rolle slides



G* GRASS

The star in your cabinet



SENSOTRONIC

Electronically controlled aided movement for drawers integrated in Nova Pro Series, Drawers can be opened and closed by just Light touch on the front. Elegant look - Furniture without 'Front handle', Can take loads up to 40 kg and 70 kg. Full drawer extension from 270-650,



TIPMATICPLUS [DRAWERS]

Mechanically controlled aided movement for drawers integrated in Nova Pro Series & DWD Series. Drawers can be opened and closed by. Just a light tap on the front. Elegant look - Furniture without 'Front handle'. Can take loads up to 40 kg and 70 Kg. Full drawer extension from 270-650mm.



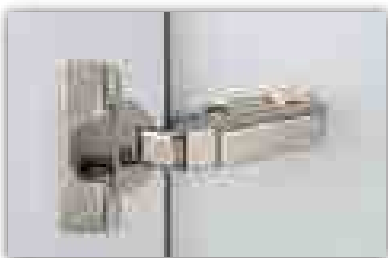
TIPMATIC PLUS (CABINET)

Mechanically controlled aided movement for cabinets integrated in all Nexis Series Hinges without closing mechanism, Gently tapping the front causes the doors to open with to a convenient angle. Can also be retrofitted.



TIPMATIC HANDLE FREE

Mechanically controlled aided movement for cabinets integrated in any hinges without closing mechanism. Can be used in any aluminum, glass or wooden handle free cabinet door. Large magnet catch range - closes doors reliably. Mounting on the front side of the cabinet or with an adapter plate.



Click On: Can be used for wooden aluminum or glass door. Available in screw-on version press-in version and with pre-mounted Euro screws. Soft-dose compatible. 3-dimensional adjustment with suitable mounting plate



Slide-On: Can be used for wooden, aluminum or glass door. This hinge is fixed to the cabinet door using screws or dowel fixing. Hinges can be fast and easily fitted one by one, from top to bottom, without any jamming problems because of the angle.

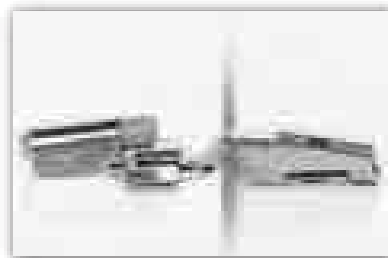


Illuxo: The hinge light system can be fitted quickly and reliably to the hinges of the Nexis series. without any tools Energy-saving LED-s. Can be fitted to existing installations. Integrated automatic switching. Uses battery.



Impresso: The Nexis Impresso series can be fitted to the door front without tools using the cup fixing for fast installation and removal. Can be fitted quickly and reliably on site with a light push for the hinge to engage with an audible click Can be used on material such as Chipboard

Damper for Soft Closing: Can be fitted without tools - also as an upgrade. Requires no additional drilling on the cabinet or door. Individually adjustable for damping strength. The damping system can be used for almost all hinges in the Nexis series.





For over 130 years Laidlaw has been supplying door hardware and fittings to some of the most prestigious buildings in the UK and overseas. We have built up an enviable reputation for supplying to projects of any scale, delivered on time and to the highest technical specifications.

Laidlaw, Providing Total Solutions

The Laidlaw philosophy is to work closely with architects and specifiers to provide a total solution to suit each particular application. Each element is carefully selected to meet the performance, aesthetic and budgetary requirements of every project. We supply to a nationwide network of contractors and deliver accurate solutions in all areas of the construction industry.



All-metal Snap-On hinge

Easy to assemble, install and adjust. Available for all applications including the damper element Airmatic Pin for silent door closing actions and alternatively, the Tipmatic opening system for handle-free doors. Can be used on any wooden door.



All-metal construction

Hardened parts and wear-free automatic closing mechanism. The mechanical spreading of the fixing dowels ensures that the hinges are very firmly attached.

- Easy to assemble, install and adjust.
- Can be used on any wooden door.



Doors close gently and nearly without a sound. The integrated Airmatic element forms an air cushion that slows down the closing speed of the door. Easy to assemble, install and adjust. Can be used on any wooden door.



Fastens on door without drilling. Particularly shallow construction. For glass thicknesses 4 to 6 mm. Opening angle 90° – 180°



Hinges can be fitted in a fully automatic machine process. Hinges can always be detached and attached again with a single hand movement. Advantage for logistics and processing for the furniture industry.



One-piece hinge. Optional three-point fastening on cabinet. Height adjustment via slot.

- With 026 mm cup hole. ideal for small framed doors. Opening angle 90°



Using air as the operating medium. Environmentally friendly pneumatic cushioning system. Advantage for logistics and processing for the furniture industry.



Lever Handle - Straight

Round bar straight lever handles pre-fixed to 5mm concealed fixing roses 8mm spindle supplied, SS7 & PS7 finishes are Grade 316 stainless steel Exceeds the requirements of BS EN 1906 - grade 4 (highest grade)

Pull Handles - Cranked

Supplied complete with fixings to suit timber doors, Available in 19mm and 22mm diameters, For push/pull applications select an appropriate push plate for the other side of the door, SS & PS finishes are Grade 316 Spare bolt through fixing packs are available

Lever Handle - Return to door

Round bar 'return to door' lever handles pre-fixed to 5mm concealed fixing roses, 8mm spindle supplied SS7 & PS7 finishes are Grade 316 stainless steel, Exceeds the requirements of BS EN 1906 - grade 4 (highest grade), Complies with the dimensional requirements of BS8300

Entrance Pull Handles

Supplied complete with fixings to suit timber doors, Available in 32mm and 25mm diameters, SS & PS finishes are Grade 316, Spare bolt through fixing packs are available

Escutcheons - Concealed fixing

Suitable for use in conjunction with all Orbis Commercial rose mounted lever handles or with pull handles, Snap on cover conceals fixings, Thumbturns complete with 5mm spindle and 8mm adapter suitable for door thicknesses from 35 to 54mm, Supplied with self-tapping screws for face fixing

Pull Handles - Elliptical Section

Designed to be compatible with 54 832 lever handle design, Bolt through fixing, Choice of lengths available Standard M8 fixing packs suit doors up to 55mm thick - other thicknesses to special order, Alternative fixing types are also available

Cylinder Pulls

A series of face fixed cylinder pulls suitable for use with rim nightlatches and mortice nightlatches., Supplied with self-tapping screws for surface fixing, All locking and cylinder types included.

Pull Handles - Curved Section

Designed to be compatible with 54 833.22 lever handle design, Bolt through fixing, Standard M8 fixing packs suit doors up to 55mm thick - other thicknesses to special order Alternative fixing types are also available



Door Stoppers / Door Viewers / Door Closures / Coat Hooks



WORLD CLASS IRONMONGERY BRAND



- In solid brass
- Compensating Different Architectural Designs
- Convenient finishes
- Made in Italy



531 CA



305 PA



552 CI



20 CH 100



21 CH



22 CH

REQUILLI



122 PN



121 PN



120 PN



114 MT 096



503 NO 003



63 SP 007

70 SP 007



HANDLES AND ACCESSORIES

- Compensating Different Architectural Designs
- Solid Brass
- BS EN Standards
- 10 years guarantee
- Made in Italy





Art. 318 COSMO



Art. 319 DUNA



Art. 320 SUN 20



Art. 325 ARTEMIO



Art. 330 SUN 30



Art. 331 LASER



Art. 334 ALMA25



Art. 335 ARCHI25



Art. 423 LASER Q20



Art. 433 LASER Q30



Art. 30 ENEA



Art. 305 LASER Q



Art. 48 OVUM



Art. 50 SEMPLICE



Art. 52 SICUR



Art. 53



Art. 54 BLIND



Art. 55 APOLLO



Art. 56 COSMO



Art. 57 MARGHERITA



Art. 59 SFERA



Art. 60 OTTAGONALE



Art. 61 ULISSE



Art. 68 G-ONE



Art. 71 UNICO



Art. 75 TRIANGOLO



Art. 97 UOVO



Art. 98 CLASSIC



Art. 345 ARIQ



Art. 346 ATLANTIDE



Art. 347 CLEO



Art. 349 PACIFIC



Art. 382 GENTILE



Art. 520 PI 001

Art. 520 PI 002



Art. 521 PI 001

Art. 521 PI 002



Art. 535 PI 001

Art. 535 PI 002



Art. 524 PI 001

Art. 524 PI 002



Art. Q24 PI 002



Art. Q24 PI 001



Art. 429 PI 002



Art. Q25 PI



Art. 525 PI



Art. 508 CP 00F



Art. 540 CP



Art. 508 CP 00Q



Art. 543 CP



Art. 506 CP 00A



Art. 514 CP



Art. 515 CP



Art. 555 CP



Art. CD 050



Art. CD 091



Art. CD 056



Art. CD 002



Art. CD 002



Art. CD 006



ALLUMINIO



ACCIAIO INOX
STAINLESS STEEL



- Keyless locks
- Digital locks
- Cabinet knob
- Pull handles
- Architecturally designed door handles
- All types of locks
- All types of door closers and floor springs
- Front door locks
- Bed door locks
- Garage door locks
- Digital door locks
- Mortice rock bolts
- Door lockgrounds
- All kind of hinges

Project Consultancy & Scheduling...



AL KHALILI UNITED ENTERPRISES LLC

General Hardware, Sanitarywares, and PPE

P.O. Box 1869 I Ruwi I PC 112 I Sultanate of Oman

Tel. No. (+968) 220 35 000 Fax: (+968) 24613506

Email: info@alkhalili.com I buildingmaterial@alkhalili.com

www.alkhalili.com

GSM : (+968) 97443981 I (+968) 99221243

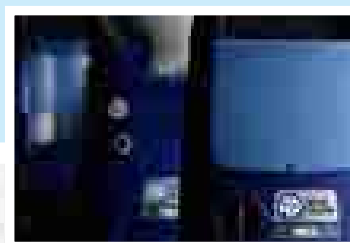
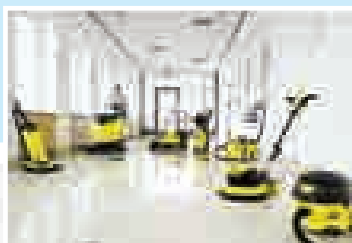
Email: : saleshw@alkhalili.com



مجموعة الخليلي
Al Khalili Group

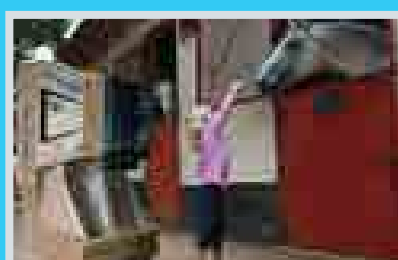
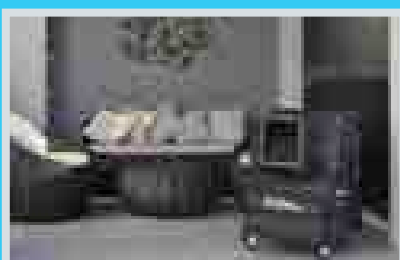
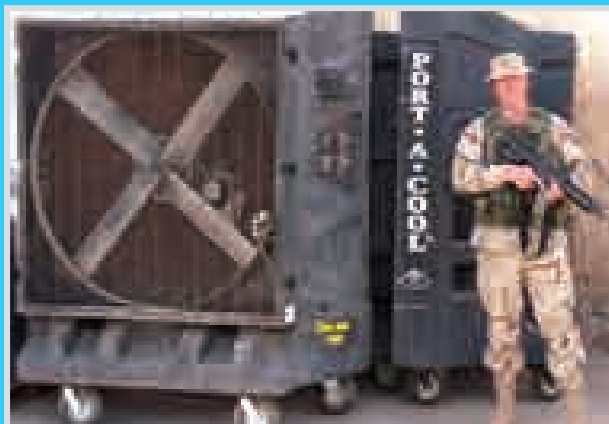
Al-Khalili

BUILDex



**CLEANING SOLUTIONS AND
AIR MOMENT PRODUCTS**

EVAPORATIVE COOLING UNITS





Over fifty years of experience in the high-pressure pump sector, a wealth of accumulated know-how, constant research into innovative designs, and marketing always oriented towards customers' needs and the changing market, have led Annovi Reverberi to launch **AR Blue Clean Power Washers**; a new brand and a new project for the cleaning sector, represent exclusively by Al Khalili Group in the Sultanate of Oman.

Residential Pressure Washers



All models equipped with 3 axial-piston wobble plate pump, long-lasting universal motor, gun-wand assembly with a fully adjustable spray head nozzle, detergent bottle, water filter, and high pressure hose. TSS standard/option feature.

Semi Professional /Professional Pressure Washers

These are with AR renowned Triplex Pump with ceramic plungers and double packing industrial seals. Powerful induction motor, gun-wand assembly, thermal protector, pressure adjustment, pressure gauge and built in detergent suction. Feature forged brass or aluminum pump head.



GFCI and automatic safety valve with low pressure by-pass on all models.

CLEANING SOLUTIONS

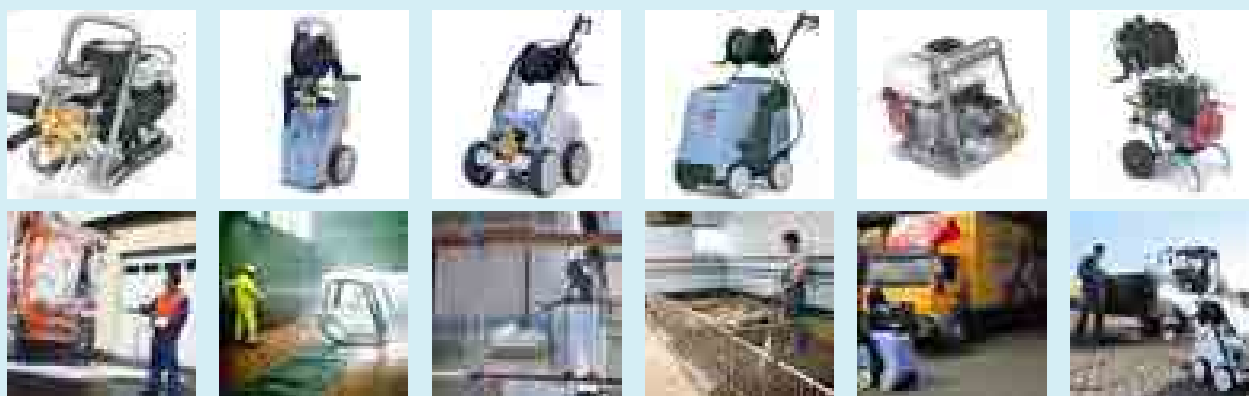
Patronizing with world reckoned brands Al Khalili Group extend world class products to its clientele in the field of hygiene cleanliness, covering both residential and professional applications.



Kranzle is one of the global leaders in the making of High Pressure Cleaners since 1974 and are known for its top design and technical perfection. **Kranzle High Pressure Cleaners are first class and made in Germany.**

They are distinguished by their extraordinary high quality, extremely modern design, high grade material, long service life and economic efficiency.

The range consists of different models ideal for use in construction, agricultural, industry and municipal facilities. The major categories are **Cold water high pressure cleaners & Hot & Cold water high pressure cleaners**, comes both in electric and fuel powered versions.

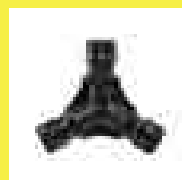
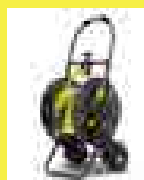
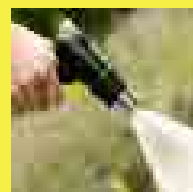
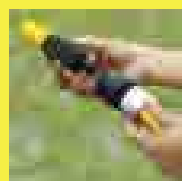
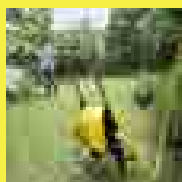
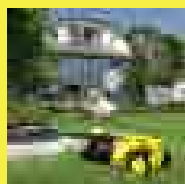


As a world leader in the field of hygiene cleanliness Karcher offer a wide range of products to cater residential, professional and industrial applications. The product range consists of :



GARDEN ACCESSORIES

- Pumps
- hose / hose trolleys
- connectors
- spray guns
- sprinklers





INDOOR CLEANING EQUIPMENTS

Window vacuum | Cordless Broom | Vacuum Cleaner | Spray Extraction Cleaner |

Steam

Cleaner | Steam Vacuum | Floor Scrubber | Scrubber Drier|

OUTDOOR CLEANING EQUIPMENTS

Sweepers | High Pressure Washers|



For queries & contact

AL KHALILI UNITED ENTERPRISES LLC

Cleaning Solutions and Air Moment Products

P.O. Box 1869 | Ruwi | PC 112 | Sultanate of Oman

Tel. No. (+968) 220 35 000 Fax: (+968) 24613506

Email: info@alkhalili.com

www.alkhalili.com

GSM : (+968) 99230965 | (+968) 97445014

Email: saleshw@alkhalili.com



AL KHALILI SPECIALIZED PROJECTS LLC

WATER PROOFING SUPPLY AND APPLICATION UNIT
SOLID SURFACES SUPPLY AND INSTALLATION UNIT
FIRE AND SAFETY SUPPLY AND INSTALLATION UNIT
PAINTS AND COATINGS SUPPLY AND APPLICATION UNIT

WATER PROOFING PRODUCTS SUPPLY & APPLICATION UNIT



Al Khalili waterproofing unit has been able to break through the market within a short span after initiating the unit in 2010. Starting with small project, today we are well equipped to handle multiple projects. In this period we were able to complete more than 450 projects of different range.

98

We are using the high-end waterproofing materials and commerce directly from the manufactures. Our products are sourced from **Dermabit (KSA)**, **Henkel Polybit** and **Grace** and also we are authorized applicators for **Dermabit (KSA)** and **Henkel Polybit**.

Well trained and experienced applicators along with our team are behind our success in delivering quality services to our esteemed clients.

TYPES OF WATERPROOFING

- APP modified polyester torch on waterproofing membranes.
- Liquid elastomeric acrylic exposed waterproofing system.
- 2 part Cementitious Modified acrylic waterproofing coatings.
- Self Adhesive waterproofing membranes.
- Tanking & Protection.
- DPC.

PRODUCTS AND SERVICES

- Bitumin Coating: Used for substructure applications.
- Damp proof membranes.
- Extruded and Expanded thermal Insulation boards for Roof.
- Cavity wall Insulation boards.
- Geotextile membranes: Used as Filter membrane, Separation layer and for waterproofing applications.
- Bitumen membrane waterproofing system.
- Liquid Exposed and Acrylic Modied Cementitious Waterproofing Coatings.
- Self Adhesive Waterproofing System.
- Underground Tanking and protection.



"170/200" SERIES

Description:
High performance, APP modified bituminous waterproofing membrane.

Uses:
All purposes heavy duty roofing systems both covered and exposed. Basement tanking, Wet areas

METHOD OF APPLICATION

We work accordingly to the instructions provided by our manufactures and all of our applicators are well trained accordingly.



SYNROOF HI-BUILD

High Performance Waterproofing Membrane



- Continuous monolithic waterproof coating which is rugged, resistant and durable.
- Seamless, Jointless
- Complete adhesion to the substrate. Reflects more than 90% of the sun's radiation.
- Enables the roof to be a "Cool Roof System."
- Energy and money saver
- Improves low slope roof system's durability.
- Excellent elasticity and elongation.



For queries & contact

AL KHALILI SPECIALIZED PROJECTS LLC

Water Proofing Supply & Applications Unit

P.O. Box 1869 I Ruwi I PC 112 I Sultanate of Oman

Tel. No. (+968) 220 35 000 Fax: (+968) 24613506

Email: info@alkhalili.com

www.alkhalili.com

GSM : (+968) 94003918 I (+968) 92883255

Email: : saleswp@alkhalili.com



JOINERY/CARPENTRY AND SOLID SURFACES DIVISION

As a Joinery / Carpentry & Solid surfaces division, we are doing all kinds of joinery work as well as Solid surfaces (corian top) work.

We are dealing with two prestigious brands of solid surfaces

- 1) Hanex Solid Surfaces (Made in Korea)
- 2) Avonite Solid Surfaces (Made in USA)



Both Hanex & Avonite are a pioneer in the solid surfacing industry. For more than thirty years, Hanex & Avonite Surfaces have been recognized as the innovator in surfacing and a global leader in acrylic sheet technology.

Hanex & Avonite are patented, non-porous homogenous blend of either polyester or acrylic alloys and fillers. This creates a surfacing material that looks like stone but cuts like wood. The grain pattern goes all the way through which allows for three dimensional shaping.

Basic Use:

The design possibilities are unlimited. Countertops, wall cladding, furniture, moldings, architectural signage, splashes, partitions, wall panels, Vanity tops, Kitchen top and accessories can be beautifully created with a guarantee of durability.

SOLID SURFACES SUPPLY & INSTALLATION UNIT



Hanex Solid Surfaces (Made in Korea)

Hanex Solid Surfaces is the ideal material for commercial applications because of its beauty, durability, aesthetics, design flexibility, and color choices. The surfaces are crafted from a unique blend of acrylic resins and natural materials, allowing the material to be cut, shaped and formed to fit a range of designs. Best of all, unlike other surfacing materials, Hanex Solid Surfaces can be used in many applications where sanitation is of utmost importance, such as retail kitchens, hospitals, laboratories, playrooms, schools, public restrooms and workspaces – just to name a few.

Hanex Solid Surfaces can be fabricated and installed in almost any application with invisible seams, making this product truly "solid" in surfacing material. Hanex Solid Surfaces further reveals its flexibility and usability on integrated sinks and backsplashes by combining beauty, design, and practicality.

Throughout the years, solid surfaces have established themselves as an attractive, cost-effective, and easily installable product, and no one has done this better than Hanex Solid Surfaces.

The Hanex Solid Surfaces Advantage – Superior Function and Form

- Enjoy the benefits of this richly colored, durable, seamless surface that is also:
- Available in 78 rich colors and textures
- Easy to fabricate and install with inconspicuous seams
- Scratch and stain resistant – easily maintained
- Highly durable - stronger than stone
- Resistant to heat, mold, chemicals, pollutants and bacteria
- Environmentally friendly – renewable and repairable
- Safe – tested and certified by the National Sanitation for Food Safety and Food Contact under the NSF 51 Certification
- Backed by a Residential Lifetime Limited Warranty
- GREENGUARD Indoor Air Quality Certified®
- GREENGUARD for Children & SchoolsSM



Made to Perfection

Hanex Solid Surfaces are also easy to work with; can be bent and shaped during fabrication, and cut onsite with most standard saws. The wide variety of colors and patterns provide the characteristics that make it the perfect choice: an attractive, affordable, contemporary surface that can stand up to heavy traffic and day-to-day use.



Avonite Surfaces (Made in USA)

Avonite Surfaces™ brings together the ingenuity and strength two great organizations--Avonite Surfaces and Aristech Acrylics LLC. Each has been a pioneer in the solid surfacing industry. Each possesses unique facilities geared to the needs of the specific product lines.

Avonite Surfaces Innovation

Avonite Surfaces™ is a product group of Aristech Acrylics LLC – USA. It has been a pioneer in the solid surfacing industry. For more than thirty years, Avonite Surfaces has been recognized as the innovator in surfacing and a global leader in acrylic sheet technology.

The Avonite Surfaces range includes:

- Studio Collection (12.5 mm thickness)
- Foundations (12.7 mm thickness)
- Foundations (3mm thickness)

COMPOSITION & MATERIALS

Avonite Surfaces is a patented, non-porous homogenous blend of either polyester or acrylic alloys and fillers. This creates a surfacing material that looks like stone but cuts like wood. The grain pattern goes all the way through which allows for three dimensional shaping.

BASIC USES

The design possibilities are unlimited. Countertops, wall cladding, furniture, moldings, architectural signage, splashes, partitions, wall panels, Vanity tops and accessories can be beautifully created with a guarantee of durability

MAINTENANCE

Avonite Surfaces may be easily cleaned using conventional cleaning agents such as an ammonia based liquid cleaner (glass cleaner). Burns or scorches can be removed by sanding with sandpaper. Accidental nicks or chips can be repaired with special patch kits available in all standard Avonite Surfaces colors from the Studio Collection.

SANITARY USE

Avonite Surfaces has been tested and approved by the National Sanitation Foundation (NSF). Its inert and non-porous surface will not support the growth of bacteria and is ideal for food service and health-care facilities.

FABRICATION AND INSTALLATION

Avonite Surfaces should always be fabricated and installed by accredited fabricators. There are over 5,000 authorized fabricators worldwide. A list of qualified craftspeople is available through local Distributors.

WARRANTY

All Avonite Surfaces products carry either a 10 year limited written material warranty or a 10 year installed warranty when properly installed by an authorized fabricator. In addition, most Avonite Surfaces colors carry a 5 year limited exterior warranty for signage.

For queries & contact

AL KHALILI SPECIALIZED PROJECTS LLC

Solid Surfaces Supply & Installation Unit

P.O. Box 1869 | Ruwi | PC 112 | Sultanate of Oman

Tel. No. (+968) 220 35 000 Fax: (+968) 24613506

Email: info@alkhalili.com

www.alkhalili.com

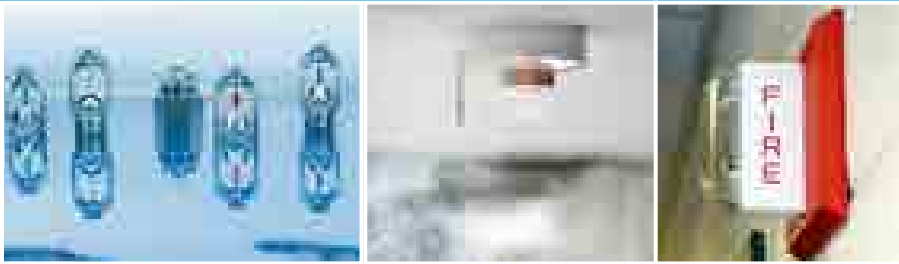
GSM : (+968) 92828063 | (+968) 92856514

Email: salesss@alkhalili.com

FIRE AND SAFETY SUPPLY & INSTALLATION UNIT

We work alongside our clients to provide customized solutions on time and within the budget. We offer composite approach in providing system solutions in Fire Detection & Protection. This includes:

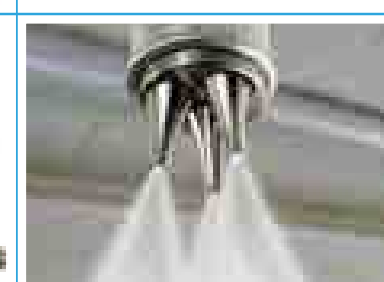
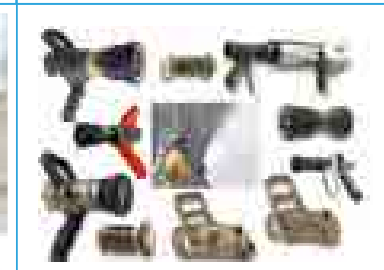
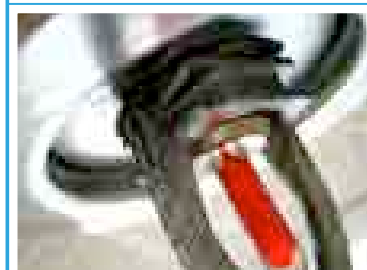
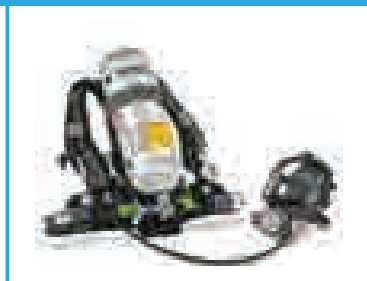
- Design & Engineering
- Procurement & Equipment supply
- Installation, Testing & Commissioning
- Service & Maintenance



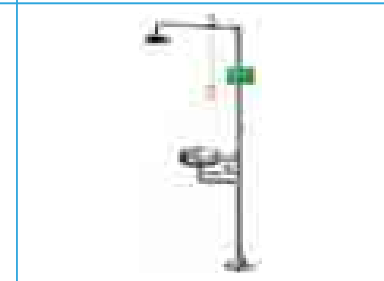
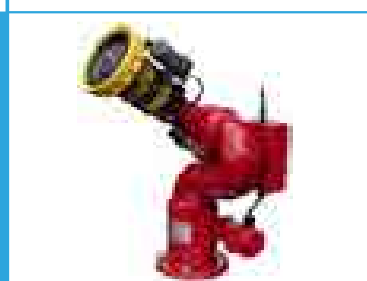
PRODUCT RANGE

- UL listed / LPCB Approved Conventional, Digital, Analogue, Voice Evacuation type Fire Detection and Control System
- UL Listed Automatic FM 200 / CO2 / Novec 1230 Fire Extinguishing Systems
- UL listed Water Sprinkler System, Deluge and Water Spray Systems
- UL Listed Portable / Mobile / Fixed Foam Equipments & Foam System, Foam Concentrates, Foam Skids
- Monitors : Foam, Water, Remote Controlled, Portable
- Dry & Wet Riser System
- BS6391 Type I, II, III Kitemarked Approved Lay Flat Fire Hoses
- Fire Hose Reels, Fire Cabinets, Fire Water Booster Pump Sets
- Pillar Fire Hydrants, Landing Valves & MESC Spec Hydrant Valves
- Fire Blanket /Smoke Curtain, GRP Fire Equipment Cabinets
- Fire Extinguishers, Emergency Lights
- Brach pipes, All types of GM / LA Fire Fighting Fittings & Accessories
- Water & Foam Monitors, Nozzles, Hi- Vol Trailer mounted Monitors
- Free Fall Fire Valves, Hydrostatic Content Gauge, Solenoid Valves, Level Sensors and Capacitance Based Level Equipment
- Kitchen hood Wet Suppression System, Dry Chemical Suppression System





- Fireman Suits / Helmets / Gloves / Boots / Accessories
- Gas Tight suits, Chemical Suits, Full / Half Face Mask, Filters, Respirators
- Self Contained Breathing Apparatus / Emergency Life Support Apparatus (Escape Sets) / Airline Apparatus, Respirators / Gas Monitors
- Personal Protective Equipment: - Helmets, Gloves, Safety Goggles, Coveralls, Safety harness etc.
- Portable & Vehicle Fire Pumps, Engine Driven
- Emergency & Rescue Tools, Rescue Equipment for Fire Squads & Airbags
- Nozzles, Monitors, Lay flat Hoses, Turrets, Valves, Fittings, Accessories,
- Foam Making Branch pipe inductors and ancillary products
- High Pressure Breathing Air Charging Compressors
- Fire Brigade Vehicle & Accessories, Fire Pump Accessories and Fittings
- Various types Dry Chemical Powders & Foam Concentrates
- Safety Showers, Eye / Face wash, Portables, & Decontamination Units
- Positive Ventilators, Smoke Ejectors, Smoke Generators





Fike



SigniFire

FLAME, SMOKE AND
INTRUSION VIDEO
DETECTION TECHNOLOGY

INTELLIGENT FIRE ALARM CONTROL SYSTEMS



COMBAT FIRE FIGHTING EQUIPMENTS

BRISTOL
Fire Engineering
Since 1974

Firefighting Solutions Provider



JACTONE PREMIUM RANGE
FIRE EXTINGUISHERS

VIKING

VK-200 Clean Agent System
VK-1230 Clean Agent System

GLOBE
FIRE SPRINKLER CORPORATION

SPRINKLER SYSTEM EQUIPMENT



Buckeye Fire Equipment manufactures:
Restaurant Fire Suppression Systems.
Hand Held, Wheeled & Specialty Fire Extinguishers.
Foam Concentrates & Hardware.

NK Fire & Safety
(A Division of NewAge Fire Fighting Co. Ltd.)



Photoluminescent safety signs

For queries & contact

AL KHALILI SPECIALIZED PROJECTS LLC

Fire & Safety Supply & Installation Unit

P.O. Box 1869 | Ruwi | PC 112 | Sultanate of Oman

Tel. No. (+968) 220 35 000 Fax: (+968) 24613506

Email: info@alkhalili.com

www.alkhalili.com

GSM : (+968) 94107018 | (+968) 97445048

Email: fsu@alkhalili.com

PAINTS

Keeping up with the tradition of being a market leader in building material supplies Al Khalili has included the best brands that the paint industry has to offer.

Our scope of activity does not end with supplying a range of the best products in the paints industry, we have also extended our services in the Application of paints as well.

Following is a list of our Goods & Services related to the Paint Industry:



We are the largest distributors for Jotun paints in Oman. We are spread across 15 branches in Oman with 10 multicolor centres and growing. We also have a Protective Coating Mixing machine which can tint any PU or Epoxy topcoat to the desired shade.

Jotun needs no introduction in Oman, it is a Norwegian based MNC which enjoys a global presence and is the most preferred paint brand in the Middle East region.



BERGER

We also distribute Berger Paints, which is part of the Global Indian Paint brand Asian Paints. Berger has the whole range of paints and coating from decorative, protective to wood finishes.



Decorative Colors and Paint selection is made easy with the use of **MULTI COLOR MIXING MACHINES** and our experienced counter staff at our 15 paint counters across Oman.

We have the unique facility of mixing **Protective Coatings** like **Epoxy** and **Polyurethane** to match

Range of Paint Products & Services

Our range of paint products includes the following:

Emulsions

- Water based paints for Interior & External wall

Enamels

- Oil based paints

Epoxy & Polyurethane based paints

- Paints for specialized application like floors, car parks, marine and Industrial applications

Wood stains & varnishes

- Décor for furniture, joineries etc

Special decorative paints

- Stone finishes, Marble Stucco, Pearl & Mettalic effects etc

Apart from paints we also sell a wide range of paints accessories and supporting products. These include - **Paint Brushes**, **Decorative Rollers**, **Emulsion & Enamel Rollers**, **Putty knives**, **Spatula**, **Covering/Polythene sheets**, **Masking Tapes**, **Paint removers** etc.



AL KHALILI SPECIALIZED PROJECTS LLC

Paints & Coatings Supply & Application Unit

P.O. Box 1869 | Ruwi | PC 112 | Sultanate of Oman

Tel. No. (+968) 220 35 000 Fax: (+968) 24613506

Email: info@alkhalili.com

www.alkhalili.com

GSM : (+968) 96776719 | (+968) 99858539

Email: : salespc@alkhalili.com